

## Information security

GRI 103-2, 418-1

### Information security policies

As companies are accelerating their DX strategies, more and more things and types of information are connecting to each other, bringing new value to society. Unfortunately, threats such as cyber attacks are being carried out more skillfully each day, and there is an ever-present threat that company information, customer details and other private information will be leaked. Attacks like these stand in the way of sustainable growth of companies, and it is critical that these risks are managed.

With this in mind, Aisin has established the AISIN Group Information Security Basic Policy. Information assets that are entrusted to us by customers and trading partners or are related to the group's business activities are vital assets of the AISIN Group, and we carry out systematic, ongoing information security measures to protect them.

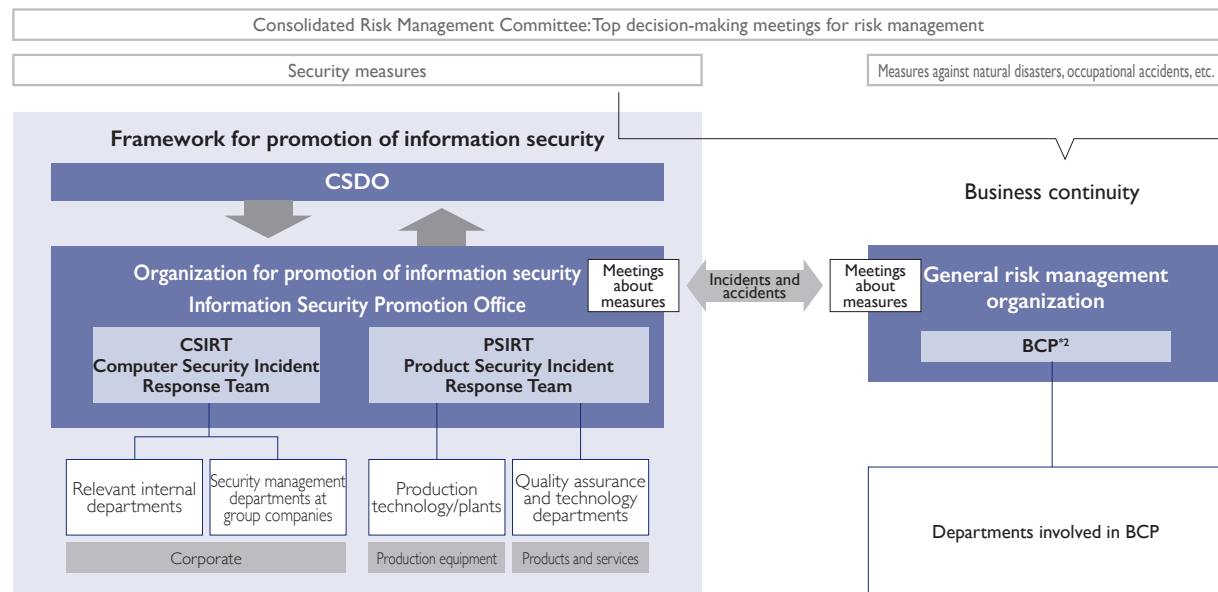
### Framework for promotion of information security

Aisin CSDO\*<sup>1</sup> is responsible for establishing structures such as information strategies and IT investment plans based on our business strategies, and it holds responsibility and authority for execution and operations related to information security and privacy throughout the AISIN Group. Under our CSDO, we have established the Information Security Promotion Office as a specialist security organization to protect the company from risks, such as cyber attacks and unauthorized actions

by employees, and are carrying out security activities throughout the AISIN Group. Information security policies and measures are proposed by the Consolidated Risk Management Committee to improve information security throughout the AISIN Group. Major security incidents that could cause issues such as stopping production are immediately reported to our CSDO and departments involved in risk management, and investigations, analysis and countermeasures are carried out.

\*1 Chief Software & Digital Officer

Framework for promotion of information security



\*2 Business continuity planning