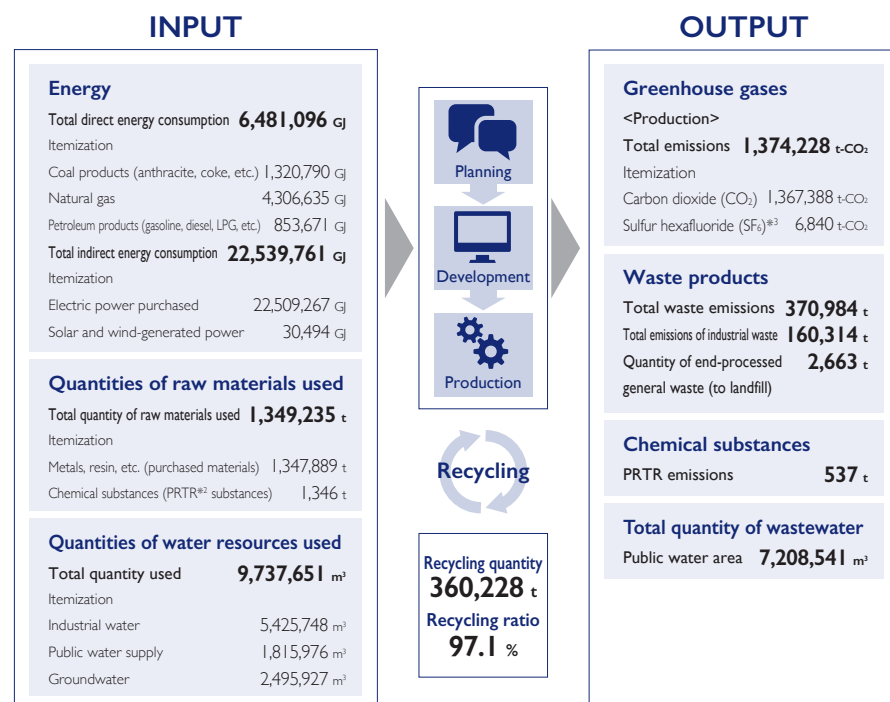


Environmental data

Environmental management

GRI 201-1, 2,302-1, 306-1

Resources used and emissions released (fiscal year 2022) 50 core companies in Japan*1



*1 50 domestic group companies: Aisin, Aisin Takaoka, Aisin Chemical, Aisin Keikinzoku, Aisin Kiko, Aisin Sin'ei, Aisin Fukui, Hosei Brake Industry, ADVICS, Shirokei, Art Metal Mfg., Aisin Development, Aisin Tohoku, Aisin Kyushu, Aisin Kyushu Casting, Aisin Hokkaido, Aichigiken, Saitama Kogyo, Kotobuki Industry, Yamagata Clutch, Sinsan, Konan Kogyo, Hekinan Unso, Sanetsu Unyu, Technova, Aisin Collabo, Aisin Infotex, Aisin Software, FT Techno, IMRA Japan, CVTEC, CVTEC Hokkaido, CVTEC Kyushu, Aisin Mizunami, Aisin Metaltech, Aisin Digital Engineering, Aisin Logitech Service, Aisin Machinetech, Awqius Japan, Aisin Sinwa, Sinwa Kogyo, AT Kyusyu, AT Tohoku, Hirabayashi Industry, Aisin Takaoka Engineering, Inatetsu Giken, Shinko Seiki, Technometal, Tonamino Kogyo, and AS Brake Systems

*2 Pollutant Release and Transfer Register, a system requiring businesses to identify the amount of various hazardous chemical substances released from business sites into the environment (air, water, soil) and the amount transferred outside as waste, as well as reporting the data to the national government. The national government estimates the amounts released and transferred and announces them to the public based on the data submitted.

*3 Sulfur hexafluoride (SF₆): A greenhouse gas whose global warming effect is estimated to be 22,800 times greater than that of CO₂.

Environmental accounting

(Billion yen)

FY	11 manufacturing companies in Japan*1			Main subsidiaries in Japan*2			
	2020	2021	2022	2020	2021	2022	
Environmental conservation costs	Business operation costs	10.17	8.95	10.26	11.30	10.34	11.81
	Management costs	1.18	0.87	1.13	1.39	1.14	1.36
	Upstream/downstream costs	4.17	2.55	2.94	4.19	2.58	3.11
	Research and development costs	17.98	12.18	9.64	18.13	12.27	9.70
	Social contribution activity costs	0.19	0.06	0.04	0.20	0.10	0.05
	Environmental remediation costs	0.03	0.02	0.07	0.03	0.02	0.07
	Total	33.72	24.63	24.08	35.24	26.45	26.10
Effects of environmental conservation measures	Energy saving	1.65	1.39	0.59	1.67	1.50	0.78
	Resource saving	0.46	0.28	0.70	0.46	0.28	0.71
	Effects of reducing waste materials	0.04	0.06	0.04	0.07	0.26	0.18
	Sale of valued property	6.64	5.95	12.78	6.74	6.31	13.38
	Total	8.79	7.68	14.11	8.94	8.35	15.05

Note: These figures are based on the Environmental Accounting Guidelines FY2006, issued by Japan's Ministry of the Environment.

*1 11 production group companies in Japan: 11 companies in the group excluding non-production company Aisin Development.

*2 31 companies in FY2020, 42 companies in FY2021, and 50 companies in FY2022. The 50 companies in FY2022 are in the same range as the input raw materials above.