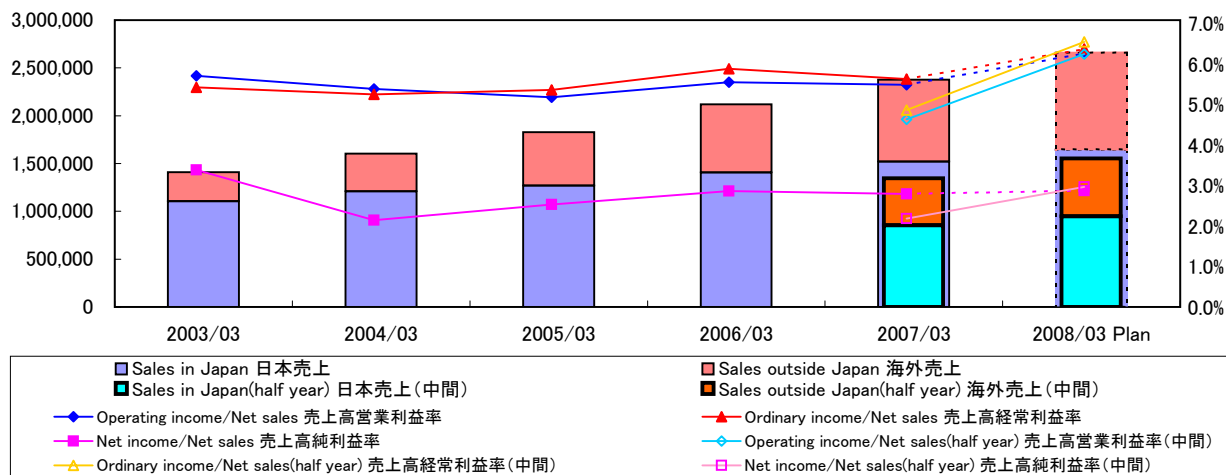
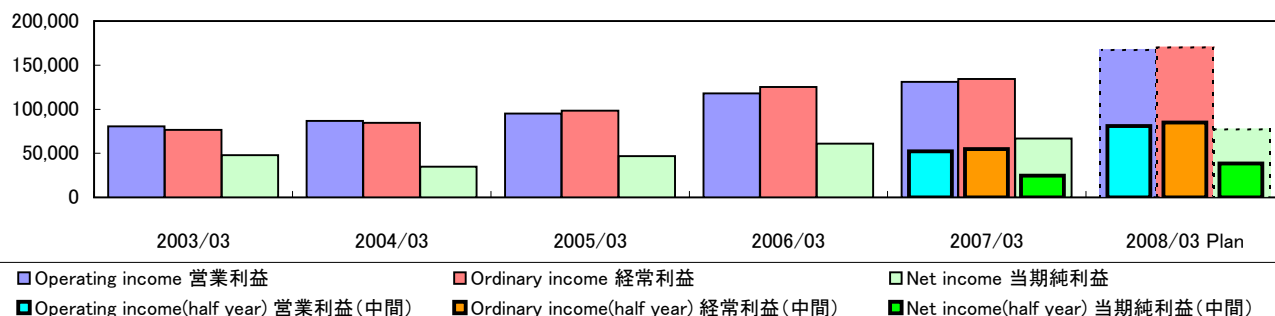


(1) Net Sales 売上高



		Millions of yen 百万円							
		2003/03	2004/03	2005/03	2006/03	2006/09	2007/03	2007/09	2008/03 Plan
		one year	one year	one year	one year	half year	one year	half year	one year
Net sales	売上高	1,408,013	1,605,252	1,829,065	2,120,589	1,120,308	2,378,612	1,293,501	2,660,000
Change from previous period	前期比	15.2%	14.0%	13.9%	15.9%	12.7%	12.2%	15.5%	11.8%
Sales in Japan	日本売上	1,103,980	1,208,312	1,269,497	1,406,585	711,850	1,520,082	788,611	1,643,600
Rate to net sales	売上比	78.4%	75.3%	69.4%	66.3%	63.5%	63.9%	61.0%	61.8%
Sales outside Japan	海外売上	304,033	396,940	559,568	714,004	408,458	858,530	504,890	1,016,400
Rate to net sales	売上比	21.6%	24.7%	30.6%	33.7%	36.5%	36.1%	39.0%	38.2%
Operating income/Net sales	売上高営業利益率	5.7%	5.4%	5.2%	5.6%	4.7%	5.5%	6.3%	6.3%
Ordinary income/Net sales	売上高経常利益率	5.4%	5.3%	5.4%	5.9%	4.9%	5.6%	6.6%	6.4%
Net income/Net sales	売上高純利益率	3.4%	2.2%	2.6%	2.9%	2.2%	2.8%	3.0%	2.9%

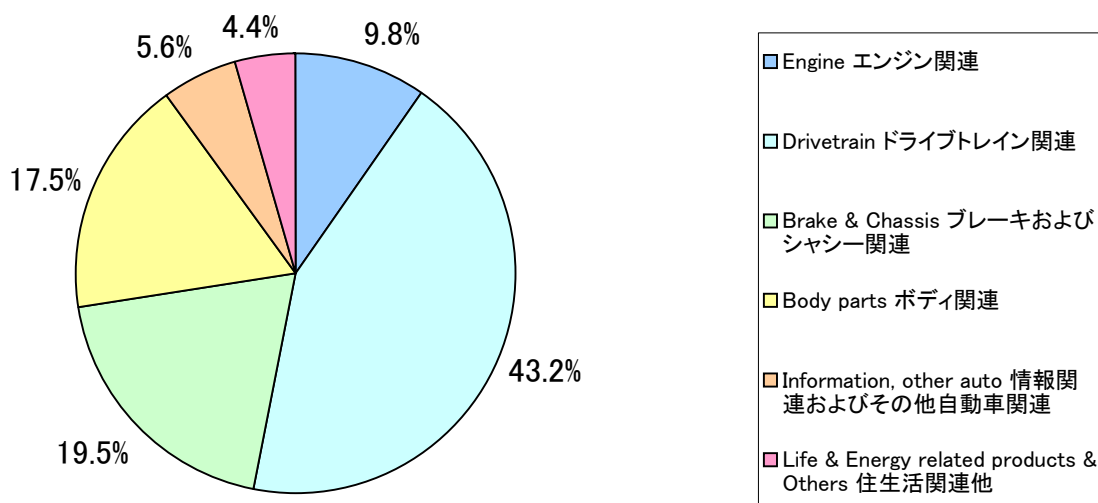
(2) Profits 利益



		Millions of yen 百万円							
		2003/03	2004/03	2005/03	2006/03	2006/09	2007/03	2007/09	2008/03 Plan
		one year	one year	one year	one year	half year	one year	half year	one year
Operating income	営業利益	80,601	86,768	95,111	118,097	52,171	131,034	81,031	167,000
Change from previous period	前期比	32.9%	7.7%	9.6%	24.2%	0.4%	11.0%	55.3%	27.4%
Ordinary income	経常利益	76,591	84,654	98,457	125,097	54,695	134,287	84,882	170,000
Change from previous period	前期比	27.0%	10.5%	16.3%	27.1%	-1.2%	7.3%	55.2%	26.6%
Net income	当期純利益	47,994	34,719	46,719	61,096	24,683	66,890	38,628	77,000
Change from previous period	前期比	87.1%	-27.7%	34.6%	30.8%	-4.9%	9.5%	56.5%	15.1%

(1) Breakdown of Sales by Product Line 製品別売上高

2007/09



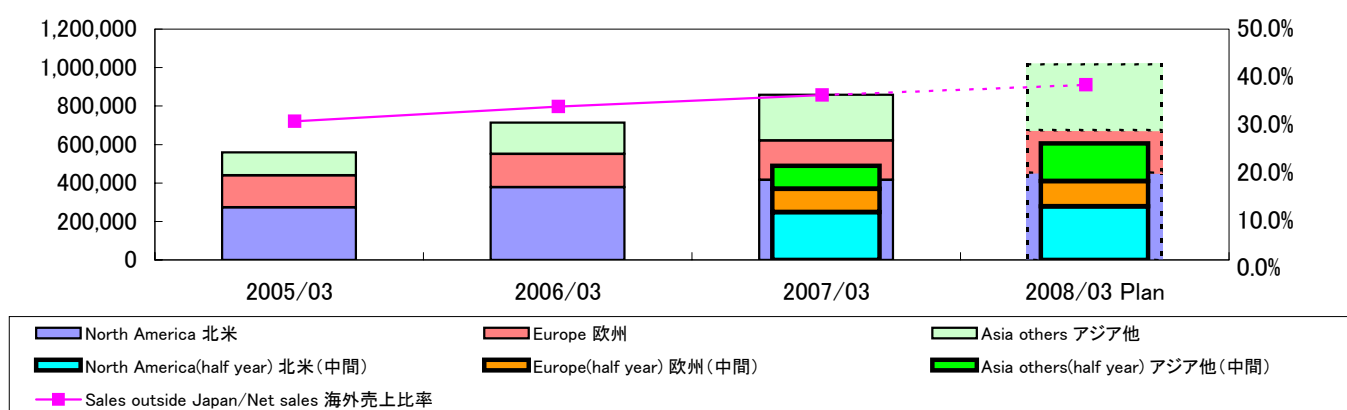
		Millions of yen 百万円					
		2005/03	2006/03	2006/09	2007/03	2007/09	2008/03 Plan
		one year	one year	half year	one year	half year	one year
Engine	エンジン関連	173,649	197,399	105,644	223,275	126,314	262,000
	構成比	9.5%	9.3%	9.4%	9.4%	9.8%	9.8%
	前期比	13.0%	13.7%	13.2%	13.1%	19.6%	17.3%
Drivetrain	ドライブトレイン関連	768,684	901,644	470,882	1,014,017	559,021	1,143,000
	構成比	42.0%	42.5%	42.0%	42.6%	43.2%	43.0%
	前期比	14.1%	17.3%	11.1%	12.5%	18.7%	12.7%
Brake & Chassis	ブレーキおよびシャシー関連	372,045	425,182	225,575	468,261	252,844	525,000
	構成比	20.3%	20.1%	20.2%	19.7%	19.5%	19.7%
	前期比	8.5%	14.3%	13.3%	10.1%	12.1%	12.1%
Body parts	ボディ関連	317,992	379,549	209,723	433,211	226,468	465,000
	構成比	17.4%	17.9%	18.7%	18.2%	17.5%	17.5%
	前期比	11.1%	19.4%	21.8%	14.1%	8.0%	7.3%
Information, other auto	情報関連およびその他自動車関連	113,609	123,231	62,849	140,053	72,017	143,000
	構成比	6.2%	5.8%	5.6%	5.9%	5.6%	5.4%
	前期比	49.7%	8.5%	4.7%	13.7%	14.6%	2.1%
Life & Energy related products & Others	住生活関連他	83,086	93,584	45,635	99,795	56,837	122,000
	構成比	4.6%	4.4%	4.1%	4.2%	4.4%	4.6%
	前期比	14.4%	12.6%	-0.2%	6.6%	24.5%	22.3%
Total	合計	1,829,065	2,120,589	1,120,308	2,378,612	1,293,501	2,660,000

## (2) Main Products 主要製品

		Main Products 主要製品	
Automotive Business 自動車関連	Engine エンジン関連	Oil pump, Water pump, オイルポンプ、ウォーターポンプ、 Intake/Exhaust manifold, Casting parts インテーク/エキゾーストマニホールド、粗形材部品	
	Drivetrain ドライブトレイン関連	Automatic transmission, オートマチックトランスミッション、 Manual transmission, Clutch マニュアルトランスミッション、クラッチ	
	Brake & Chassis ブレーキおよびシャシー関連	ABS, Brake booster, ABS、ブレーキブースター、 Disk brake, Drum brake, VSC ディスクブレーキ、ドラムブレーキ、VSC	
	Body parts ボディ関連	Door components, Sunroof, ドア部品、サンルーフ、 Seat components, Window regulator, シート部品、ウィンドレギュレーター、 Occupant weight sensor 体重検知センサー	
	Information, other auto 情報関連他	Car navigation system, カーナビゲーションシステム、 Parking assist system, Sensors 駐車アシストシステム、各種センサー	
Life & Energy related products & Others 住生活関連他	Sewing machine, Shower-toilet seat, ミシン、シャワートイレ、 GHP(Gas engine driven heat-pump air conditioner), GHP(ガスヒートポンプエアコン)、 Bed, Others ベッド等		

## (3)Sales by Customer Location 地域別売上高

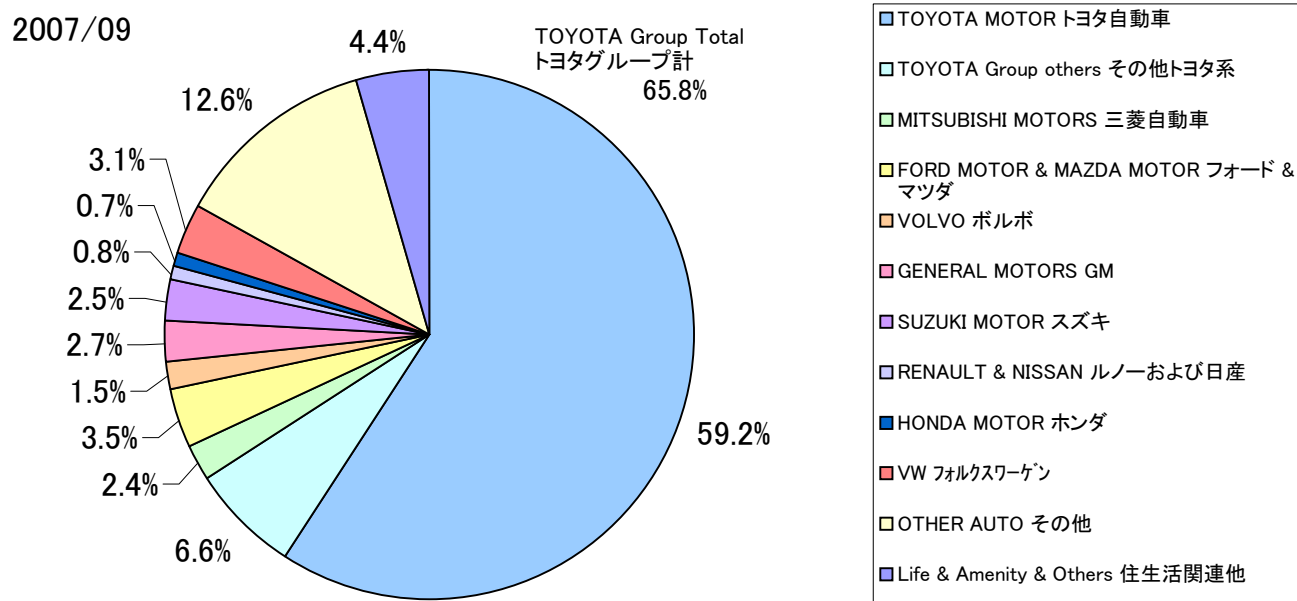
[Consolidated 連結]



Millions of yen 百万円

		2005/03	2006/03	2006/09	2007/03	2007/09	2008/03 Plan
		one year	one year	half year	one year	half year	one year
North America	北米	273,667	377,540	206,369	415,764	231,469	452,300
	Percentage of net sales	48.9%	52.9%	50.5%	48.4%	45.8%	44.5%
	Change from previous period	42.1%	38.0%	15.0%	10.1%	12.2%	8.8%
Europe	欧州	166,024	173,878	102,056	205,129	109,488	222,000
	Percentage of net sales	29.7%	24.4%	25.0%	23.9%	21.7%	21.8%
	Change from previous period	52.4%	4.7%	25.8%	18.0%	7.3%	8.2%
Asia others	アジア他	119,877	162,586	100,033	237,637	163,933	342,100
	Percentage of net sales	21.4%	22.8%	24.5%	27.7%	32.5%	33.7%
	Change from previous period	25.6%	35.6%	42.9%	46.2%	63.9%	44.0%
Sales outside Japan total	海外売上合計	559,568	714,004	408,458	858,530	504,890	1,016,400
Sales outside Japan/Net sales	海外売上比率	30.6%	33.7%	36.5%	36.1%	39.0%	38.2%

## (4) Breakdown of Sales by Customer 得意先別売上高

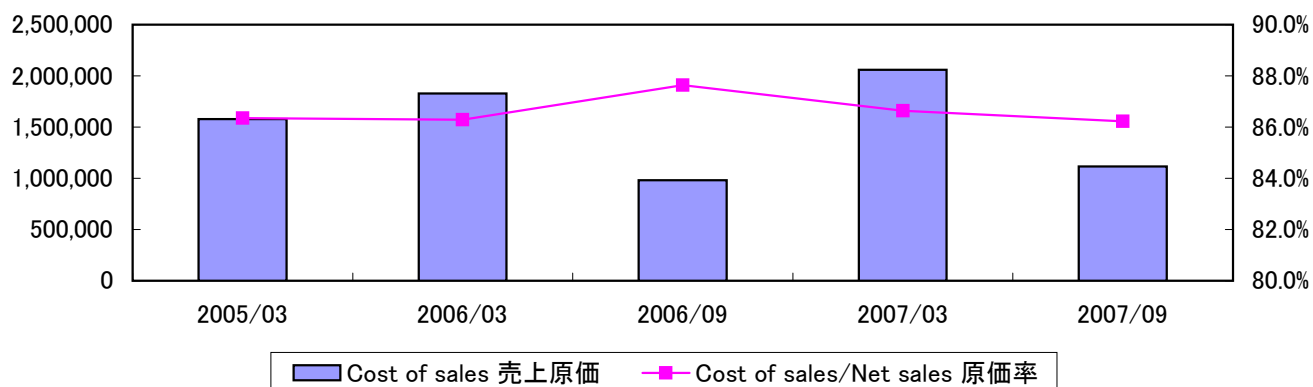


Millions of yen 百万円

		2005/03	2006/03	2006/09	2007/03	2007/09	2008/03 Plan
		one year	one year	half year	one year	half year	one year
Automotive	自動車関連						
TOYOTA MOTOR	トヨタ自動車	873,058	948,797	478,843	1,030,217	530,124	1,101,400
TOYOTA MOTOR Overseas	トヨタ海外	225,917	295,749	183,886	374,214	235,456	468,100
DAIHATSU MOTOR	ダイハツ	18,651	20,309	12,465	26,720	13,713	28,200
TOYOTA Group others	その他トヨタ系	101,655	133,643	66,572	136,781	71,872	151,300
TOYOTA Group sub-total	トヨタグループ計	1,219,281	1,398,498	741,766	1,567,932	851,165	1,749,000
DAIMLERCHRYSLER	ダイムラークライスラー	1,689	2,766	2,283	5,953	5,510	10,600
MITSUBISHI MOTORS	三菱自動車	36,653	41,560	20,842	50,848	30,748	62,500
FORD MOTOR	フォード	15,490	50,505	30,242	55,928	26,858	54,500
MAZDA MOTOR	マツダ	14,629	22,137	18,821	38,002	18,522	40,400
VOLVO	ボルボ	37,210	38,664	19,395	44,521	19,628	44,900
GENERAL MOTORS	GM	42,243	62,962	32,407	72,808	35,437	69,100
SUZUKI MOTOR	スズキ	50,062	60,388	30,259	62,639	32,484	67,700
ISUZU MOTORS	いすゞ	18,853	19,064	11,052	21,887	10,241	21,100
RENAULT	ルノー	6,223	5,437	2,657	4,643	1,201	4,100
NISSAN	日産	29,769	30,233	10,194	19,197	9,359	20,200
HONDA MOTOR	ホンダ	13,089	14,629	7,748	16,305	8,912	17,800
VW	フォルクスワーゲン	37,961	66,138	38,666	69,515	40,635	88,500
OTHER AUTO	その他	222,827	214,024	108,341	248,639	145,964	287,600
Automotive Total	自動車関連合計	1,745,979	2,027,005	1,074,673	2,278,817	1,236,664	2,538,000
Life & Amenity	住生活関連						
INAX	イナックス	9,918	11,275	5,377	11,674	5,717	12,200
OTHER LIFE	その他	38,772	41,713	19,347	39,919	20,138	42,800
Life & Amenity Total	住生活関連合計	48,690	52,988	24,724	51,593	25,855	55,000
OTHERS	その他	34,396	40,596	20,911	48,202	30,982	67,000
Total	合計	1,829,065	2,120,589	1,120,308	2,378,612	1,293,501	2,660,000

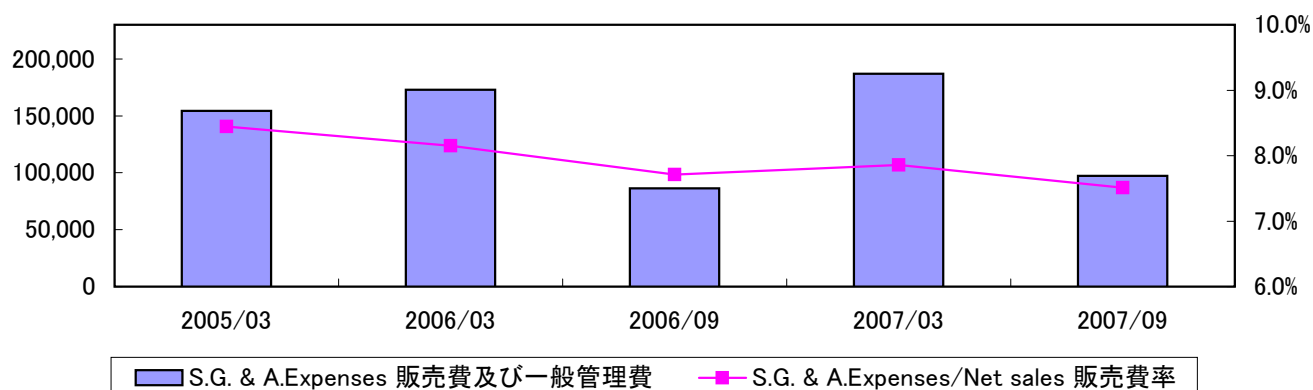
Cost of Sales  
売上原価

[Consolidated 連結]



		Millions of yen 百万円				
		2005/03	2006/03	2006/09	2007/03	2007/09
		one year	one year	half year	one year	half year
Cost of sales	売上原価	1,579,485	1,829,682	981,747	2,060,668	1,115,322
Change from previous period	前期比	14.7%	15.8%	14.3%	12.6%	13.6%
Cost of sales/Net sales	原価率	86.4%	86.3%	87.6%	86.6%	86.2%

S.G. & A.Expenses  
販売費および一般管理費

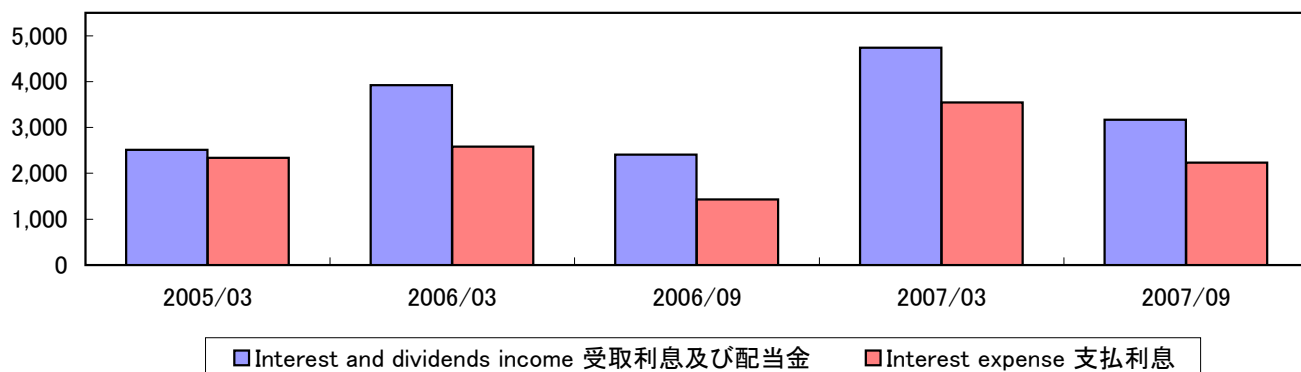


		Millions of yen 百万円				
		2005/03	2006/03	2006/09	2007/03	2007/09
		one year	one year	half year	one year	half year
S.G. & A.Expenses	販売費及び一般管理費	154,469	172,810	86,390	186,910	97,148
Change from previous period	前期比	9.3%	11.9%	3.6%	8.2%	12.5%
S.G. & A.Expenses/Net sales	販売费率	8.4%	8.1%	7.7%	7.9%	7.5%

Other Income and Expenses  
その他収支

[Consolidated 連結]

Net Financial Revenue 金融収支



		Millions of yen 百万円				
		2005/03	2006/03	2006/09	2007/03	2007/09
		one year	one year	half year	one year	half year
Interest and dividends income	受取利息及び配当金	2,510	3,926	2,409	4,736	3,170
Interest expense	支払利息	2,337	2,581	1,434	3,546	2,234
Net financial revenue	金融収支	173	1,345	975	1,190	936
Interest coverage (times)	インタレストカバレッジ(倍)	41.8	47.3	38.1	38.3	37.7

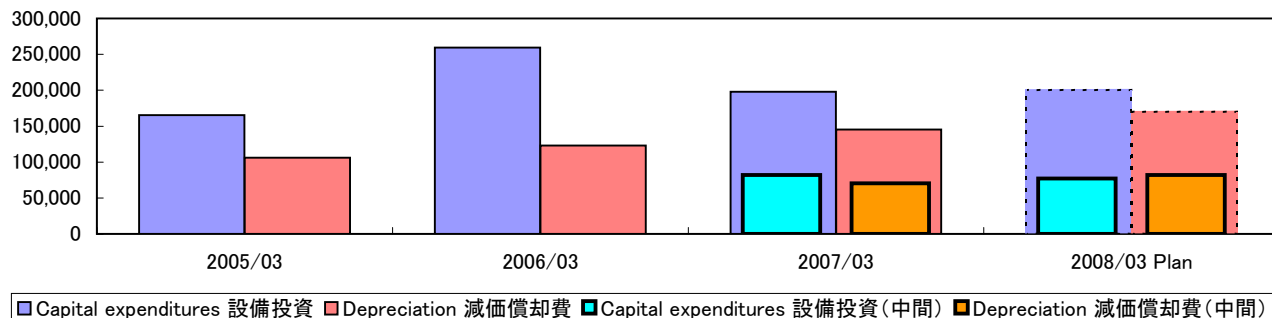
NOTES: Interest coverage = (Operating income + Interest and dividends income) / Interest expense

注: インタレストカバレッジ = (営業利益 + 受取利息配当金) / 支払利息

Capital Expenditures, Depreciation  
投資設備、減価償却費

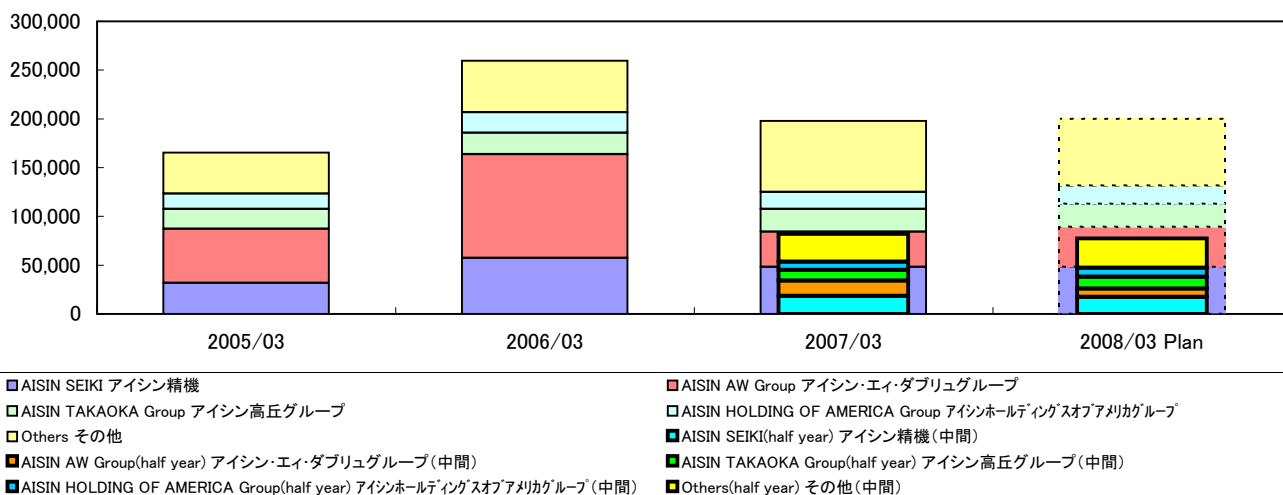
[Consolidated 連結]

(1) Capital Expenditures, Depreciation 設備投資、減価償却費



		Millions of yen 百万円					
		2005/03	2006/03	2006/09	2007/03	2007/09	2008/03 Plan
		one year	one year	half year	one year	half year	one year
Capital expenditures	設備投資	165,289	259,540	82,004	197,806	77,335	200,000
Change from previous period	前期比	15.5%	57.0%	-22.2%	-23.8%	-5.7%	1.1%
Depreciation	減価償却費	105,969	123,034	70,420	145,277	82,176	170,000
Change from previous period	前期比	8.6%	16.1%	22.1%	18.1%	16.7%	17.0%

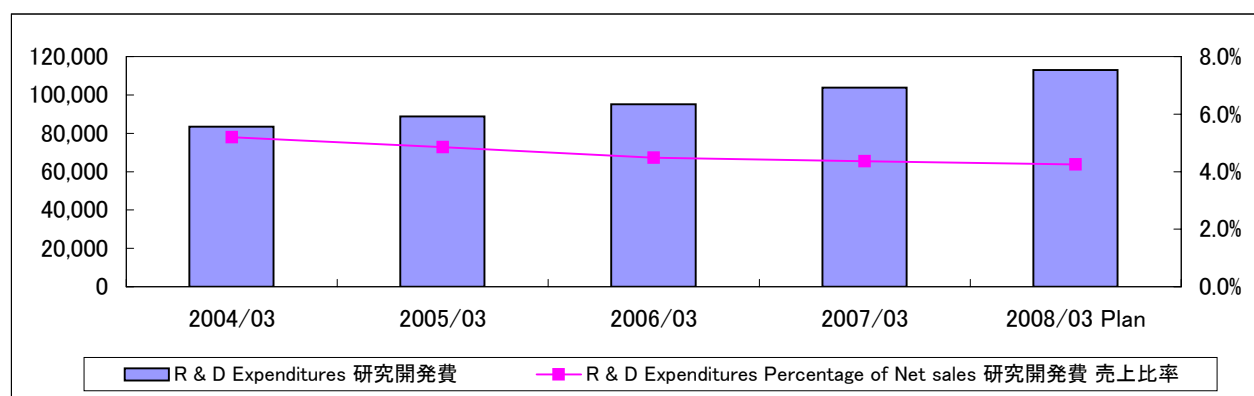
(2) Capital Expenditures by Company 設備投資額会社別内訳



		Millions of yen 百万円					
		2005/03	2006/03	2006/09	2007/03	2007/09	2008/03 Plan
		one year	one year	half year	one year	half year	one year
AISIN SEIKI	アイシン精機	31,960	57,509	18,482	48,240	17,355	48,000
Change from previous period	前期比	12.3%	79.9%	4.6%	-16.1%	-6.1%	-0.5%
AISIN AW Group	アイシン・エイ・ダブリュグループ	55,482	106,309	15,739	36,262	8,496	41,100
Change from previous period	前期比	-4.2%	91.6%	-67.2%	-65.9%	-46.0%	13.3%
AISIN TAKAOKA Group	アイシン高丘グループ	20,147	21,852	10,583	23,118	12,313	23,600
Change from previous period	前期比	19.5%	8.5%	19.8%	5.8%	16.3%	2.1%
AISIN HOLDING OF AMERICA Group	アイシンホールディングスオプアメリカグループ	15,859	21,023	8,834	17,497	9,001	18,600
Change from previous period	前期比	84.7%	32.6%	-5.9%	-16.8%	1.9%	6.3%
Others	その他	41,841	52,847	28,366	72,689	30,170	68,700
Change from previous period	前期比	33.6%	26.3%	31.8%	37.5%	6.4%	-5.5%

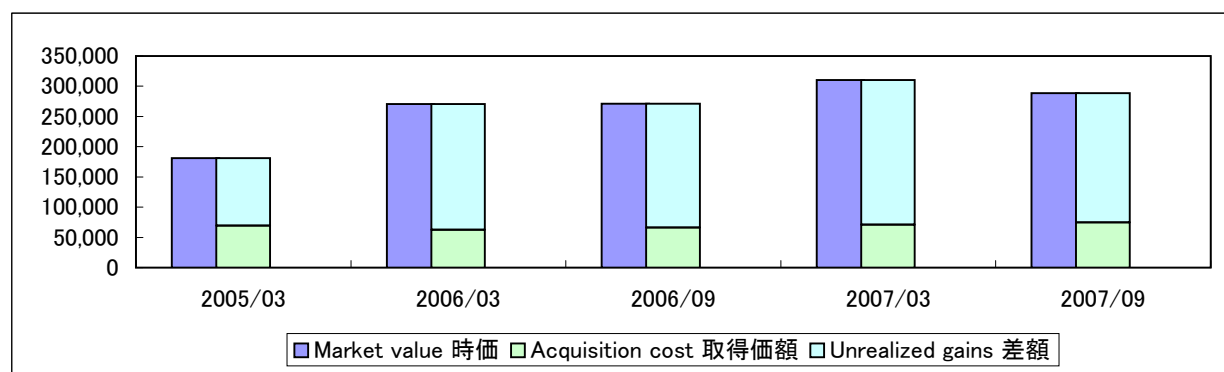
Research and Development Expenditures  
研究開発費

[Consolidated 連結]



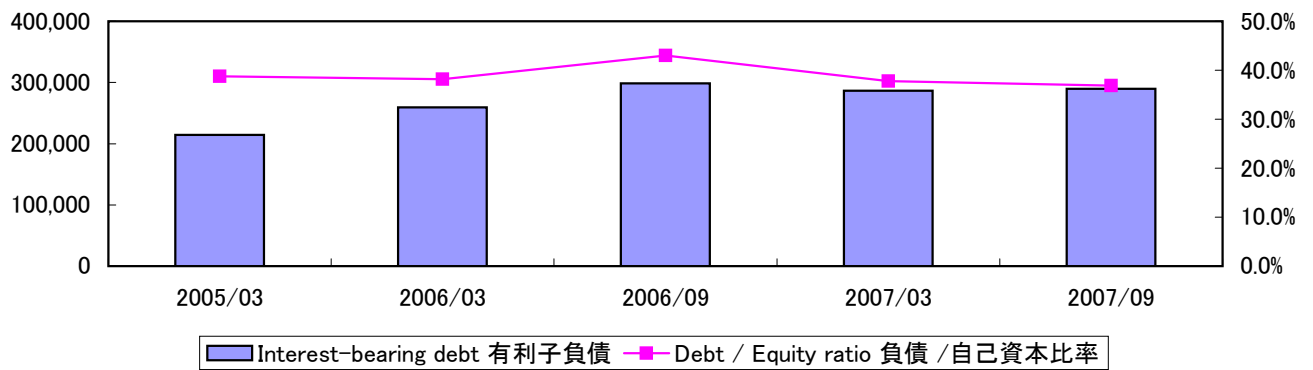
		Millions of yen 百万円				
		2004/03	2005/03	2006/03	2007/03	2008/03 Plan
R & D Expenditures	研究開発費	83,410	88,800	95,149	103,750	113,000
Change from previous period	前期比	5.2%	6.5%	7.1%	9.0%	8.9%
Percentage of Net sales	売上比率	5.2%	4.9%	4.5%	4.4%	4.2%

Unrealized Gains on Marketable Securities  
市場性のある有価証券の含み益



		Millions of yen 百万円				
		2005/03	2006/03	2006/09	2007/03	2007/09
Equity securities	株式					
Market value	時価	157,863	254,031	250,968	285,456	259,094
Acquisition cost	取得価額	45,942	45,881	45,884	45,835	45,831
Unrealized gains	差額	111,921	208,150	205,084	239,621	213,263
Debt securities and others	債券他					
Market value	時価	23,207	16,416	20,312	24,941	29,290
Acquisition cost	取得価額	23,185	16,511	20,318	24,957	29,016
Unrealized gains	差額	22	-95	-6	-16	274

(1) Safety 安全性



		Millions of yen 百万円				
		2005/03	2006/03	2006/09	2007/03	2007/09
Total assets	総資産	1,503,314	1,853,459	1,849,182	2,037,896	2,030,407
Total assets turnover(times)	総資産回転率(回転)	1.2	1.1	0.6	1.2	0.6
Interest-bearing debt	有利子負債	214,197	259,349	298,756	286,595	289,581
Debt / Equity ratio	負債 / 自己資本比率	38.8%	38.2%	43.0%	37.8%	36.9%
Shareholders' equity	自己資本	552,753	678,881	694,488	758,744	785,181
Shareholders' ratio	自己資本比率	36.8%	36.6%	37.6%	37.2%	38.7%

NOTES1: Interest-bearing debt=Short-term borrowings+Long-term debt+Straight bonds  
+Convertible bonds(included Convertible bonds due within one year)+Commercial paper  
Debt/equity ratio=Interest-bearing debt/Shareholders' equity ratio

NOTES2: Effective from the fiscal half year ended Sep. 30, 2006, we adopted the new accounting standards.

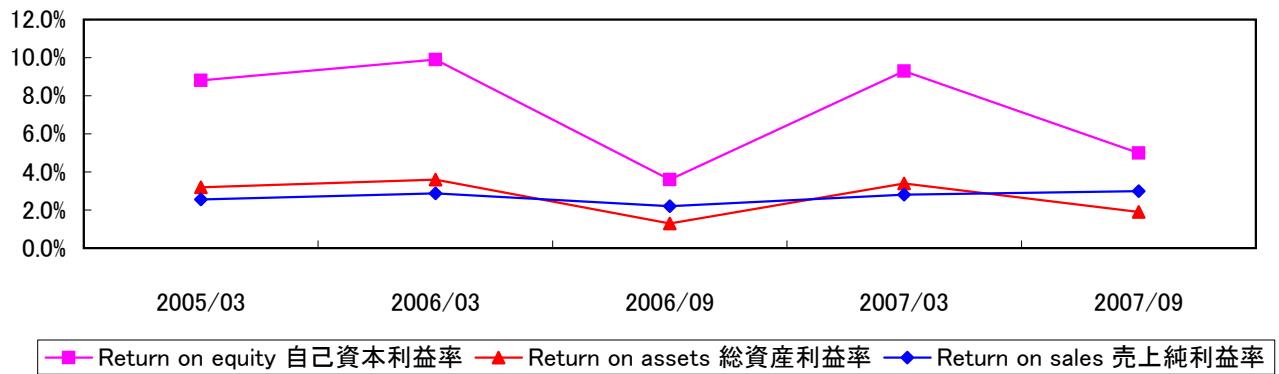
注1: 有利子負債=短期借入金+長期借入金+社債+  
転換社債(一年以内に返済期限の到来するものを含む)+コマーシャル・ペーパー  
負債/自己資本比率=有利子負債/自己資本

注2: 2007年3月期 中間決算より新会計基準を適用しています。

## (2) Profitability and Investment Analysis Ratios 収益性

[Consolidated 連結]

## ① Return on Equity, Return on Assets and Return on Sales 自己資本利益率、総資産利益率、売上純利益率 他



		Yen 円				
		2005/03	2006/03	2006/09	2007/03	2007/09
Return on equity	自己資本利益率	8.8%	9.9%	3.6%	9.3%	5.0%
Return on assets	総資産利益率	3.2%	3.6%	1.3%	3.4%	1.9%
Return on sales	売上純利益率	2.6%	2.9%	2.2%	2.8%	3.0%
Average number of shares outstanding(in thousands)						
期中平均発行済株式数(千株)		285,807	286,628	287,037	287,039	285,190
Earnings per share	一株当たり当期純利益	159.94	209.15	85.99	233.03	135.45
Cash dividends per share	一株当たり配当金	24.00	32.00	16.00	40.00	24.00
Number of shares outstanding as of the respective balance sheet datas(in thousands)						
期末発行済株式数(千株)		286,089	286,973	287,318	284,944	285,569
Shareholders' equity per share	一株当たり純資産	1,928.58	2,361.66	2,417.14	2,662.78	2,749.53

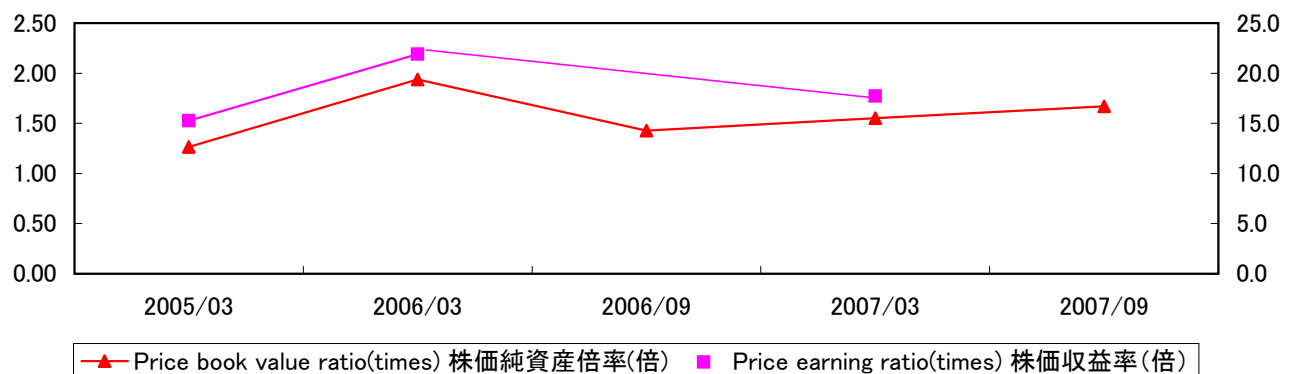
NOTES1: The figures for ratios involving shareholders' equity and total assets are calculated based on average shareholders' equity and total assets at the beginning and the end of each fiscal year.

NOTES2: Effective from the fiscal half year ended Sep. 30, 2006, we adopted the new accounting standards.

注1: 利益率は、各年度の期首・期末の総資産及び自己資本の平均値に基づいて計算されています。

注2: 2007年3月期 中間決算より新会計基準を適用しています。

## ② PER, PCFR and PBR 株価収益率、株価純資産倍率



		2005/03	2006/03	2006/09	2007/03	2007/09
Stock price at the end of fiscal year(yen)	期末株価(円)	2,440	4,580	3,450	4,130	4,590
Price earning ratio(times)	株価収益率(倍)	15.3	21.9	-	17.7	-
Price yield	株価益回り	6.6%	4.6%	-	5.6%	-
Price book value ratio(times)	株価純資産倍率(倍)	1.27	1.94	1.43	1.55	1.67

NOTES1: Price earning ratio = Stock price at the end of fiscal year / Earnings per share

Price book value ratio = Stock price at the end of fiscal year / Shareholders' equity per share

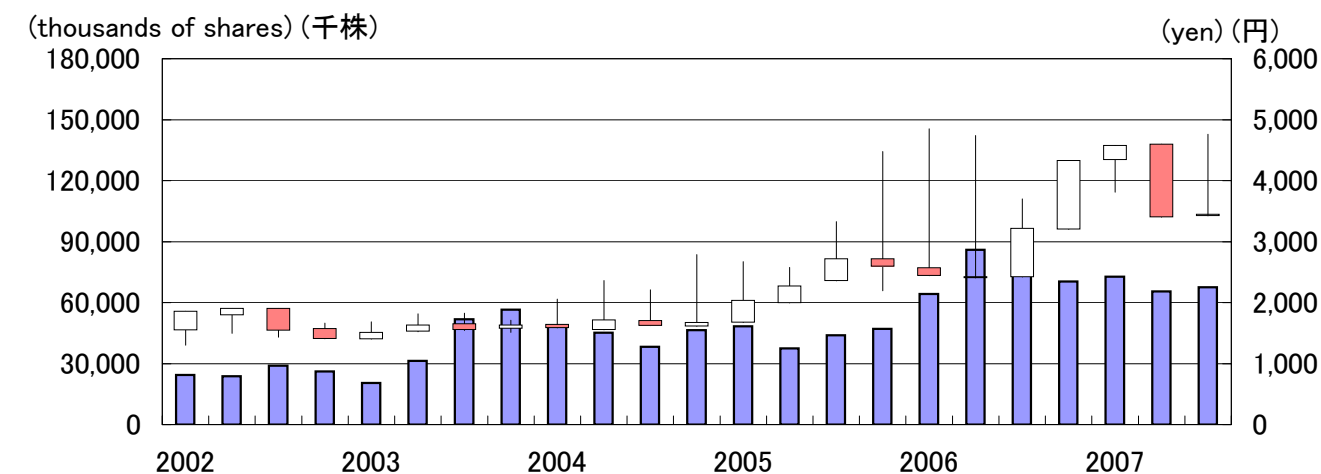
NOTES2: Effective from the fiscal half year ended Sep. 30, 2006, we adopted the new accounting standards.

注1: 株価収益率(倍) = 株価 / 一株当たり当期純利益

株価純資産倍率 = 株価 / 一株当たり純資産

注2: 2007年3月期 中間決算より新会計基準を適用しています。

## (3) Stock Price Change, Trading Volume and Number of Shares Outstanding 株価推移、出来高、発行済株式数



Trading volume 出来高 → ■

Stock Prices High

Opening

Closing

Low

High

Closing

Opening

Low

高値

始値

終値

安値

高値

終値

始値

安値

Orange : Opening Price &gt; Closing Price

White : Closing Price &gt; Opening Price

オレンジ : 始値 &gt; 終値

白 : 終値 &gt; 始値

		2002	2003	2004	2005	2006	2007
Stock prices(yen) 株価(円)							
Jan - Mar	1~3月						
High	高値	1,574	1,685	2,060	2,670	4,850	4,460
Low	安値	1,302	1,510	1,670	2,320	3,870	3,810
Apr - Jun	4~6月						
High	高値	1,778	1,814	2,360	2,575	4,740	4,550
Low	安値	1,497	1,520	1,798	2,240	3,150	3,860
Jul - Sep	7~9月						
High	高値	1,759	1,828	2,735	3,330	3,700	4,760
Low	安値	1,433	1,543	2,210	2,375	2,925	3,850
Oct - Dec	10~12月						
High	高値	1,663	1,712	2,785	4,480	4,020	
Low	安値	1,492	1,510	2,195	3,140	3,390	
Trading volume(thousands of shares) 出来高(千株)							
Jan - Mar	1~3月	24,363	20,523	48,707	48,402	64,329	72,808
Apr - Jun	4~6月	23,725	31,279	45,137	37,487	86,013	65,538
Jul - Sep	7~9月	28,919	51,814	38,245	43,911	79,321	67,562
Oct - Dec	10~12月	26,171	56,605	46,523	47,095	70,359	

## Number of Employees

## 従業員数

		2005/03	2006/03	2006/09	2007/3	2007/09
Number of employees	従業員数	53,237	59,587	64,307	66,383	70,240

Consolidated Balance Sheets  
連結貸借対照表

[Consolidated 連結]

	Millions of yen 百万円				
	2005/03	2006/03	2006/09	2007/03	2007/09
<b>Assets</b> <b>資産の部</b>					
<b>Current Assets:</b> <b>流動資産:</b>					
Cash and time deposits 現金および預金	90,288	95,443	94,090	98,629	94,429
Marketable securities 有価証券	34,109	32,435	16,026	38,622	42,635
Notes and accounts receivable 受取手形および売掛金	287,956	336,865	330,185	363,726	374,329
Less : Allowance for doubtful accounts 貸倒引当金	-690	-1,776	-745	-732	-702
Inventories たな卸資産	122,461	148,782	158,425	168,763	170,090
Deferred tax assets 繰延税金資産	35,921	42,842	37,654	48,387	47,391
Other current assets その他流動資産	31,837	39,439	40,514	49,974	50,709
<b>Total current assets</b> <b>流動資産合計</b>	<b>601,882</b>	<b>694,030</b>	<b>676,149</b>	<b>767,369</b>	<b>778,881</b>
<b>Property, Plant and Equipment:</b> <b>有形固定資産:</b>					
Buildings and structures 建物および構築物	409,857	460,024	473,327	503,781	523,005
Machinery and equipment 機械装置、車両運搬具	1,056,425	1,199,497	1,245,647	1,307,565	1,364,097
Furniture, fixtures and office 工具器具備品	199,507	216,691	223,941	234,287	242,881
Less : Accumulated depreciation 減価償却累計額	-1,157,184	-1,244,251	-1,289,836	-1,343,154	-1,416,198
Land 土地	82,258	85,321	85,638	88,412	89,837
Construction in progress 建設仮勘定	36,353	60,482	46,424	48,302	39,571
<b>Net property, Plant and equipment</b> <b>有形固定資産合計</b>	<b>627,216</b>	<b>777,764</b>	<b>785,141</b>	<b>839,193</b>	<b>843,193</b>
<b>Investments and Advances:</b> <b>投資その他の資産:</b>					
Investment securities 投資有価証券	215,953	319,717	321,398	357,422	331,634
Long-term receivables 長期貸付金	4,246	4,314	4,828	4,260	4,616
Less : Allowance for doubtful accounts 貸倒引当金	-628	-455	-1,217	-489	-459
Deferred tax assets 繰延税金資産	22,031	21,451	22,100	24,229	25,089
Excess of cost of investments over equity in net assets acquired のれん	15	-	2,190	3,566	3,185
Others その他投資	32,599	36,638	38,593	42,346	44,268
<b>Total investments and advances</b> <b>投資その他の資産合計</b>	<b>274,216</b>	<b>381,665</b>	<b>387,892</b>	<b>431,334</b>	<b>408,333</b>
<b>Total assets</b> <b>資産合計</b>	<b>1,503,314</b>	<b>1,853,459</b>	<b>1,849,182</b>	<b>2,037,896</b>	<b>2,030,407</b>

NOTES: Effective from the fiscal half year ended Mar. 31, 2007, we adopted the new accounting standards.  
注: 2007年3月期 中間決算より新会計基準を適用しています。

	2005/03	2006/03	2006/09	2007/03	2007/09
Liabilities and net assets 負債および純資産の部					
Current liabilities: 流動負債:					
Commercial paper and short-term borrowings コマーシャル・ペーパーおよび短期借入金	58,779	46,888	55,048	30,519	33,978
Straight bonds due within one year 一年以内償還社債	-	150	150	15,000	15,000
Notes and accounts payable 支払手形および買掛金	262,654	327,177	317,243	359,873	349,933
Income taxes payable 未払法人税等	21,419	31,783	12,353	41,647	24,835
Accrued expenses 未払費用	106,470	117,499	113,466	130,345	134,104
Other current liabilities その他流動負債	82,290	115,603	79,415	101,686	78,047
Total current liabilities 流動負債合計	531,612	639,100	577,675	679,070	635,897
Long-term liabilities: 固定負債:					
Straight bonds 社債	25,650	35,500	35,000	20,000	20,000
Long-term debt 長期借入金	129,768	176,811	208,558	221,076	220,603
Deferred tax liabilities 繰延税金負債	26,458	63,609	62,596	72,627	66,837
Liability for employees' retirement benefits 退職給付引当金	81,965	84,751	85,517	79,794	80,515
Other long-term liabilities その他固定負債	9,415	2,624	3,982	9,476	6,719
Total long-term liabilities 固定負債合計	273,256	363,295	395,653	402,973	394,674
Shareholders' equity: 株主資本:					
Common stock, per value ¥50 per share 資本金	45,049	45,049	45,049	45,049	45,049
Additional paid-in capital 資本剰余金	63,061	63,263	63,814	57,891	58,763
Retained earnings 利益剰余金	392,836	445,241	463,360	501,010	532,798
Less : Treasury stock 自己株式	-3,116	-1,821	-1,393	-1,568	-1,492
Evaluation and conversion difference: 評価・換算差額等:					
Net unrealized gain on available-for-sale securities その他有価証券評価差額	66,597	123,721	122,100	145,136	127,118
Profit & loss of deferral 繰延ヘッジ損益	-	-	-560	-668	-595
Foreign currency translation adjustments 為替換算調整勘定	-11,674	3,428	2,118	11,893	23,540
Subscription warrant 新株予約権	-	-	42	168	339
Minority interests 少数株主持分	145,693	172,183	181,324	196,942	214,316
Total net assets 純資産計	698,446	851,064	875,854	955,853	999,836
Total liabilities and net assets 負債および純資産合計	1,503,314	1,853,459	1,849,182	2,037,896	2,030,407

NOTES: Effective from the fiscal half year ended Mar. 31, 2007, we adopted the new accounting standards.  
注: 2007年3月期 中間決算より新会計基準を適用しています。

Consolidated Statements of Income  
連結損益計算書

[Consolidated 連結]

	Millions of yen 百万円				
	2005/03	2006/03	2006/09	2007/03	2007/09
	one year	one year	half year	one year	half year
Net sales 売上高	1,829,065	2,120,589	1,120,308	2,378,612	1,293,501
Cost of sales 売上原価	1,579,485	1,829,682	981,747	2,060,668	1,115,322
Gross profit 売上総利益	249,580	290,907	138,561	317,944	178,179
Selling, General and administrative expenses 販売費および一般管理費	154,469	172,810	86,390	186,910	97,148
Operating income 営業利益	95,111	118,097	52,171	131,034	81,031
Non-operating Income: 営業外収益:					
Interest and dividend income 受取利息配当金	2,510	3,926	2,409	4,736	3,170
Equity in earnings of affiliates 持分法による投資利益	5,548	5,542	3,059	6,303	4,262
Other non-operating income その他営業外収益	9,127	10,874	4,620	10,664	5,008
Non-operating expenses: 営業外費用:					
Interest expense 支払利息	2,337	2,581	1,434	3,546	2,234
Other non-operating expenses その他営業外費用	11,502	10,761	6,130	14,904	6,355
Ordinary income 経常利益	98,457	125,097	54,695	134,287	84,882
Extraordinary Loss: 特別損失:					
Impairment Loss of Fixed Assets 減損損失	5,727	-	-	-	-
Income before income taxes and minority interests 税金等調整前当期純利益	92,730	125,097	54,695	134,287	84,882
Income Taxes 法人税等					
Current 法人税、住民税および事業税等	32,609	47,801	13,901	51,765	27,288
Deferred 法人税等調整額	-1,132	-7,650	5,242	-6,990	2,204
Minority interests in net income(Loss) 少数株主利益(損失)	-14,534	-23,850	-10,869	-22,622	-16,762
Net income 当期純利益	46,719	61,096	24,683	66,890	38,628

Consolidated Statements of Cash Flows  
連結キャッシュ・フロー計算書

[Consolidated 連結]

	Millions of yen 百万円				
	2005/03	2006/03	2006/09	2007/03	2007/09
	one year	one year	half year	one year	half year
<b>Operating Activities:</b> 営業活動によるキャッシュ・フロー:					
Income before income taxes and minority interests 税金等調整前当期純利益	92,730	125,097	54,695	134,287	84,882
Depreciation 減価償却費	105,969	123,034	70,420	145,277	82,176
Increase/(Decrease) in allowance for retirement benefits 退職給付引当金の増減額	3,580	2,785	766	2,186	717
Interest and dividend income 受取利息および受取配当金	-2,510	-3,926	-2,409	-4,736	-3,170
Interest expenses 支払利息	2,337	2,581	1,434	3,546	2,234
Equity in earnings of affiliates 持分法による投資利益	-5,548	-5,542	-3,059	-6,303	-4,262
Loss on sale or disposal of property, plant and equipment, net 有形固定資産売却損	4,677	3,717	1,667	5,688	1,459
Decrease/(Increase) in notes and accounts receivable 売上債権の増減額	-29,545	-46,720	7,854	-20,737	-7,821
(Increase)/Decrease in inventories 棚卸資産の増減額	-23,116	-23,493	-8,448	-14,424	377
(Decrease)Increase/in notes and accounts payable 仕入債務の増減額	20,040	59,048	-9,740	26,187	-8,881
Others その他	5,105	-13,695	-9,123	-769	-12,339
Sub total 小計	173,719	222,886	104,057	270,202	135,372
Interest and dividends received 利息及び配当金の受取額	2,933	4,748	3,373	5,753	4,953
Interest paid 利息の支払額	-2,411	-2,498	-958	-2,814	-2,154
Payment of income taxes 法人税等の支払額	-31,565	-39,420	-35,190	-44,739	-45,320
Net cash provided by operating activities 営業活動によるキャッシュ・フロー	142,676	185,716	71,282	228,402	92,851
<b>Investing Activities:</b> 投資活動によるキャッシュ・フロー					
Net (increase) decrease in time deposits and short-term investments 定期預金および有価証券の純増減額	-3,437	10,075	-6,589	-6,576	-378
Acquisitions of property, plant and equipment 有形固定資産の取得による支出	-162,328	-218,753	-122,514	-224,434	-96,507
Proceeds from sales of property, plant and equipment 有形固定資産の売却による収入	5,364	4,113	5,564	7,850	3,112
Purchase of investment securities 投資有価証券の取得による支出	-13,147	-9,433	-8,828	-11,708	-10,038
Payments for purchase of shares of consolidated company accompanied by change of scope of consolidation 連結範囲の変更を伴う子会社株式・出資金の取得による支出	-35	-	-508	-2,086	-
Proceeds of sales of investment in securities 投資有価証券の売却による収入	1,253	2,506	55	1,396	382
Proceeds of redemption at maturity of investments in securities 投資有価証券の満期償還による収入	2,329	1,086	2,219	5,496	3,075
Increase in loans 貸付による支出	-637	-1,068	-2,208	-1,400	-618
Decrease in loans 貸付金の回収による収入	750	1,009	459	938	776
Other, net その他	-4,930	-5,031	-2,376	-6,091	441
Net cash used in investing activities 投資活動によるキャッシュ・フロー	-174,818	-215,496	-134,726	-236,615	-99,755
<b>Financing Activities:</b> 財務活動によるキャッシュ・フロー:					
Net increase/(decrease) in commercial paper and short-term borrowings コマーシャル・ペーパーおよび短期借入金の純増減額	2,318	-22,598	15,433	-5,299	-3,081
Increase in long-term debt 長期借入金による収入	32,687	65,187	36,670	50,209	10,646
Repayments of long-term debt 長期借入金の返済による支出	-2,171	-7,688	-12,250	-18,995	-5,285
Increase in long-term bonds 社債の発行による収入	-	10,000	-	-	-
Repayments of long-term bonds 社債の償還による支出	-5,000	-	-500	-650	-
Receipt from minority shareholders 少数株主からの払込による収入	1,036	671	52	52	644
Cash dividends 配当金の支出額	-5,620	-7,660	-5,398	-9,953	-6,836
Cash dividends to minority shareholders 少数株主への配当金の支払額	-2,320	-2,569	-2,728	-3,664	-3,829
Purchase of treasury stock 自己株式の取得による支出	-30	-30	-12	-34	-26
Income for disposal of treasury stock 自己株式の処分による収入	1,405	1,521	1,258	1,695	1,650
Other, net その他	-	-	-	-	-
Net cash used in financing activities 財務活動によるキャッシュ・フロー	22,305	36,834	32,525	13,361	-6,117
Foreign currency translation adjustments on cash and cash equivalents 現金および現金同等物に係る換算差額	24	4,758	17	2,946	2,597
Net (decrease)/Increase in cash and cash equivalents 現金および現金同等物の増加(減少)額	-9,813	11,812	-30,902	8,094	-10,424
Cash and cash equivalents at beginning of period 現金および現金同等物の期首残高	126,214	116,401	128,213	128,213	136,307
Cash and cash equivalents at end of period 現金及び現金同等物の期末残高	116,401	128,213	97,311	136,307	125,883

Segment Information  
セグメント情報

[Consolidated 連結]

Geographical Segments by company location 所在地別セグメント情報

		Millions of yen 百万円				
		2005/03	2006/03	2006/09	2007/03	2007/09
		one year	one year	half year	one year	half year
Sales:	売上高:					
Japan:	日本:					
Sales to customers	対外部顧客	1,358,654	1,516,392	776,997	1,668,563	881,696
Intersegment sales	セグメント間	226,474	299,071	148,919	314,020	175,086
Total sales	計	1,585,128	1,815,463	925,916	1,982,583	1,056,782
North America:	北米:					
Sales to customers	対外部顧客	268,737	348,156	186,735	373,538	211,484
Intersegment sales	セグメント間	7,612	9,336	4,634	9,143	4,691
Total sales	計	276,349	357,492	191,369	382,681	216,175
Europe:	欧州:					
Sales to customers	対外部顧客	138,617	142,643	79,860	174,838	94,043
Intersegment sales	セグメント間	5,428	5,431	2,908	6,524	3,878
Total sales	計	144,045	148,074	82,768	181,362	97,921
Asia & Others:	アジア他:					
Sales to customers	対外部顧客	63,057	113,397	76,716	161,673	106,278
Intersegment sales	セグメント間	5,273	7,954	3,698	8,717	5,075
Total sales	計	68,330	121,351	80,414	170,390	111,353
Eliminations	消去	-244,787	-321,791	-160,159	-338,404	-188,730
Consolidated	連結	1,829,065	2,120,589	1,120,308	2,378,612	1,293,501
Operating income:	営業利益:					
Japan	日本	84,548	99,210	35,739	99,016	56,032
North Americas	北米	2,946	4,680	4,676	8,088	6,555
Europe	欧州	1,231	611	2,195	3,910	2,512
Asia & Others	アジア他	7,259	14,604	9,500	20,840	16,477
Eliminations	消去	-873	-1,008	61	-820	-545
Consolidated	連結	95,111	118,097	52,171	131,034	81,031