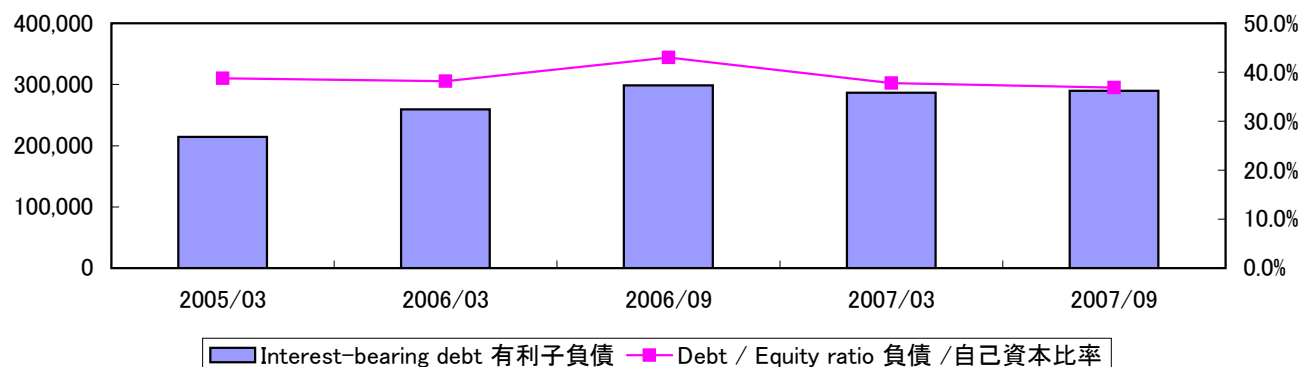


(1) Safety 安全性



		Millions of yen 百万円				
		2005/03	2006/03	2006/09	2007/03	2007/09
Total assets	総資産	1,503,314	1,853,459	1,849,182	2,037,896	2,030,407
Total assets turnover(times)	総資産回転率(回転)	1.2	1.1	0.6	1.2	0.6
Interest-bearing debt	有利子負債	214,197	259,349	298,756	286,595	289,581
Debt / Equity ratio	負債 / 自己資本比率	38.8%	38.2%	43.0%	37.8%	36.9%
Shareholders' equity	自己資本	552,753	678,881	694,488	758,744	785,181
Shareholders' ratio	自己資本比率	36.8%	36.6%	37.6%	37.2%	38.7%

NOTES1: Interest-bearing debt=Short-term borrowings+Long-term debt+Straight bonds  
+Convertible bonds(included Convertible bonds due within one year)+Commercial paper  
Debt/equity ratio=Interest-bearing debt/Shareholders' equity ratio

NOTES2: Effective from the fiscal half year ended Sep. 30, 2006, we adopted the new accounting standards.

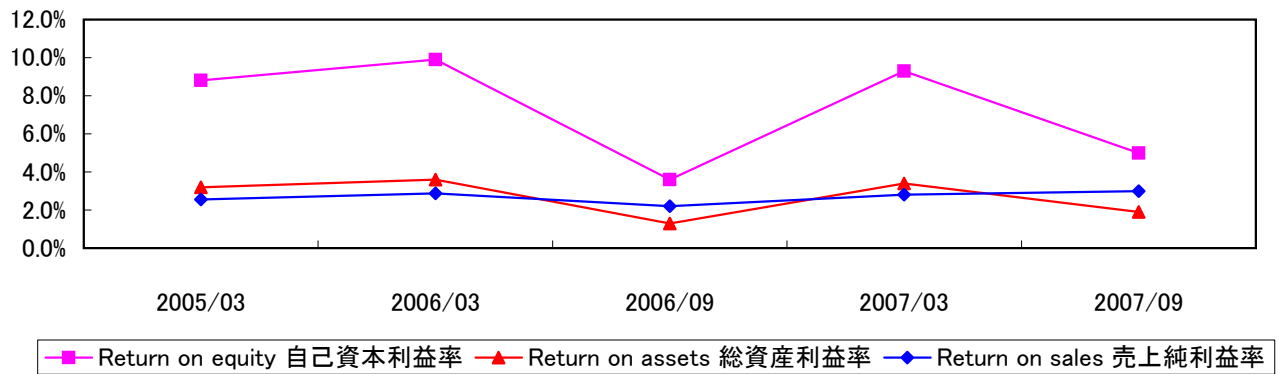
注1: 有利子負債=短期借入金+長期借入金+社債+  
転換社債(一年以内に返済期限の到来するものを含む)+コマーシャル・ペーパー  
負債/自己資本比率=有利子負債/自己資本

注2: 2007年3月期 中間決算より新会計基準を適用しています。

## (2) Profitability and Investment Analysis Ratios 収益性

[Consolidated 連結]

## ① Return on Equity, Return on Assets and Return on Sales 自己資本利益率、総資産利益率、売上純利益率 他



		Yen 円				
		2005/03	2006/03	2006/09	2007/03	2007/09
Return on equity	自己資本利益率	8.8%	9.9%	3.6%	9.3%	5.0%
Return on assets	総資産利益率	3.2%	3.6%	1.3%	3.4%	1.9%
Return on sales	売上純利益率	2.6%	2.9%	2.2%	2.8%	3.0%
Average number of shares outstanding(in thousands)						
期中平均発行済株式数(千株)		285,807	286,628	287,037	287,039	285,190
Earnings per share	一株当たり当期純利益	159.94	209.15	85.99	233.03	135.45
Cash dividends per share	一株当たり配当金	24.00	32.00	16.00	40.00	24.00
Number of shares outstanding as of the respective balance sheet datas(in thousands)						
期末発行済株式数(千株)		286,089	286,973	287,318	284,944	285,569
Shareholders' equity per share	一株当たり純資産	1,928.58	2,361.66	2,417.14	2,662.78	2,749.53

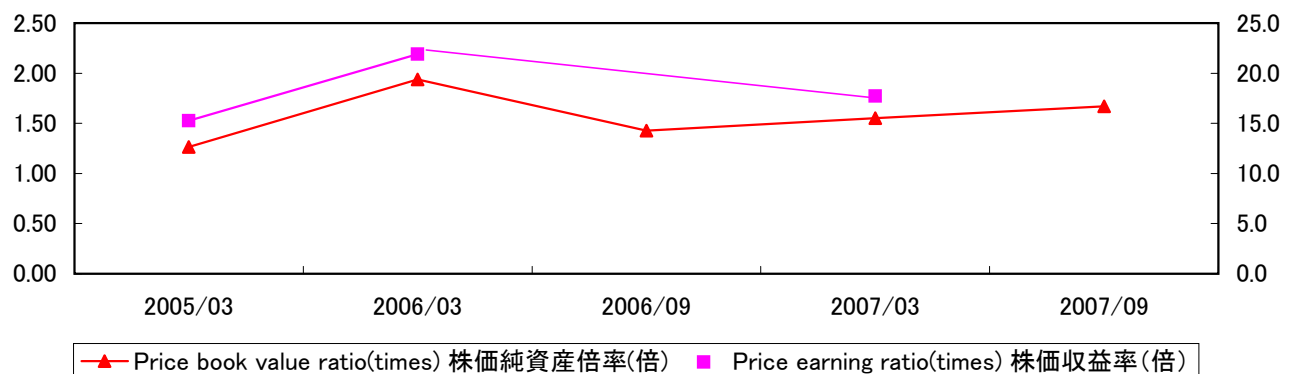
NOTES1: The figures for ratios involving shareholders' equity and total assets are calculated based on average shareholders' equity and total assets at the beginning and the end of each fiscal year.

NOTES2: Effective from the fiscal half year ended Sep. 30, 2006, we adopted the new accounting standards.

注1: 利益率は、各年度の期首・期末の総資産及び自己資本の平均値に基づいて計算されています。

注2: 2007年3月期 中間決算より新会計基準を適用しています。

## ② PER, PCFR and PBR 株価収益率、株価純資産倍率



		2005/03	2006/03	2006/09	2007/03	2007/09
Stock price at the end of fiscal year(yen)	期末株価(円)	2,440	4,580	3,450	4,130	4,590
Price earning ratio(times)	株価収益率(倍)	15.3	21.9	-	17.7	-
Price yield	株価益回り	6.6%	4.6%	-	5.6%	-
Price book value ratio(times)	株価純資産倍率(倍)	1.27	1.94	1.43	1.55	1.67

NOTES1: Price earning ratio = Stock price at the end of fiscal year / Earnings per share

Price book value ratio = Stock price at the end of fiscal year / Shareholders' equity per share

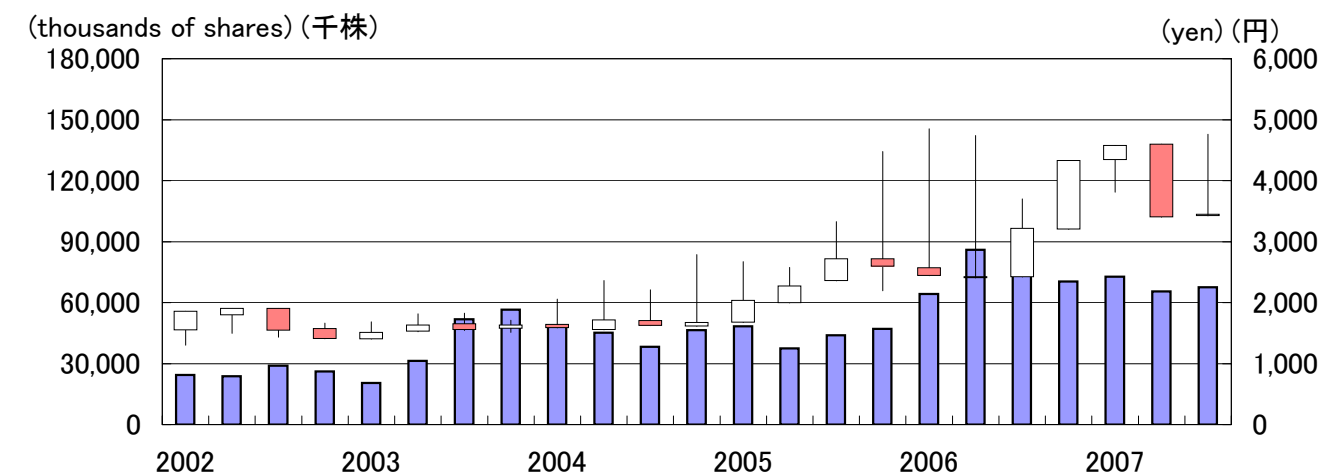
NOTES2: Effective from the fiscal half year ended Sep. 30, 2006, we adopted the new accounting standards.

注1: 株価収益率(倍) = 株価 / 一株当たり当期純利益

株価純資産倍率 = 株価 / 一株当たり純資産

注2: 2007年3月期 中間決算より新会計基準を適用しています。

## (3) Stock Price Change, Trading Volume and Number of Shares Outstanding 株価推移、出来高、発行済株式数



Trading volume 出来高 → ■

Stock Prices High

Opening

Closing

Low

High

Closing

Opening

Low

高値

始値

終値

安値

高値

終値

始値

安値

Orange : Opening Price &gt; Closing Price

White : Closing Price &gt; Opening Price

オレンジ : 始値 &gt; 終値

白 : 終値 &gt; 始値

		2002	2003	2004	2005	2006	2007
Stock prices(yen) 株価(円)							
Jan - Mar	1~3月						
	High 高値	1,574	1,685	2,060	2,670	4,850	4,460
	Low 安値	1,302	1,510	1,670	2,320	3,870	3,810
Apr - Jun	4~6月						
	High 高値	1,778	1,814	2,360	2,575	4,740	4,550
	Low 安値	1,497	1,520	1,798	2,240	3,150	3,860
Jul - Sep	7~9月						
	High 高値	1,759	1,828	2,735	3,330	3,700	4,760
	Low 安値	1,433	1,543	2,210	2,375	2,925	3,850
Oct - Dec	10~12月						
	High 高値	1,663	1,712	2,785	4,480	4,020	
	Low 安値	1,492	1,510	2,195	3,140	3,390	
Trading volume(thousands of shares) 出来高(千株)							
Jan - Mar	1~3月	24,363	20,523	48,707	48,402	64,329	72,808
Apr - Jun	4~6月	23,725	31,279	45,137	37,487	86,013	65,538
Jul - Sep	7~9月	28,919	51,814	38,245	43,911	79,321	67,562
Oct - Dec	10~12月	26,171	56,605	46,523	47,095	70,359	

## Number of Employees

## 従業員数

		2005/03	2006/03	2006/09	2007/3	2007/09
Number of employees	従業員数	53,237	59,587	64,307	66,383	70,240