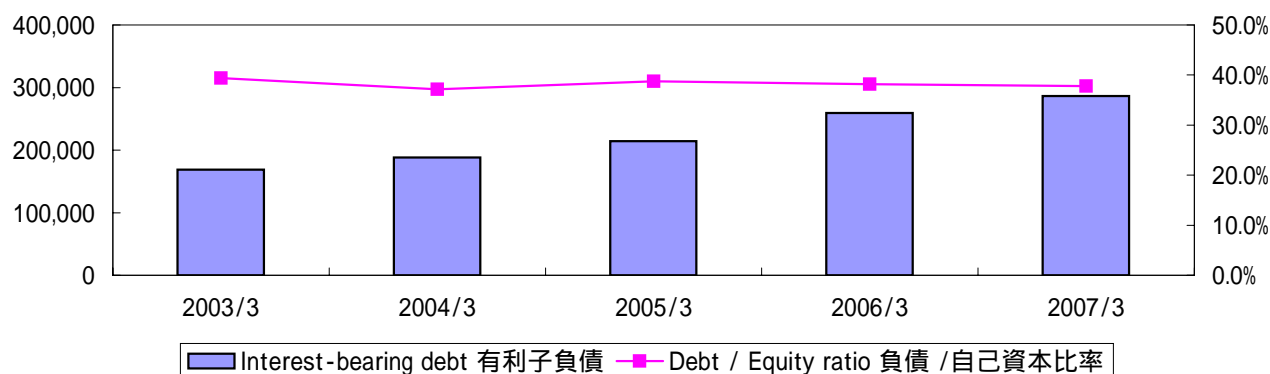


Financial Index 財務指標

(1) Safety 安全性



		Millions of yen 百万円				
		2003/3	2004/3	2005/3	2006/3	2007/3
Total assets	総資産	1,224,311	1,382,585	1,503,314	1,853,459	2,037,896
Total assets turnover(times)	総資産回転率(回転)	1.2	1.2	1.2	1.1	1.2
Interest-bearing debt	有利子負債	168,721	187,998	214,197	259,349	286,595
Debt / Equity ratio	負債 / 自己資本比率	39.4%	37.1%	38.8%	38.2%	37.8%
Shareholders' equity	自己資本	428,602	506,261	552,753	678,881	758,744
Shareholders' ratio	自己資本比率	35.0%	36.6%	36.8%	36.6%	37.2%

NOTES1: Interest-bearing debt=Short-term borrowings+Long-term debt+Straight bonds
+Convertible bonds(included Convertible bonds due within one year)+Commercial paper
Debt/equity ratio=Interest-bearing debt/Shareholders' equity ratio

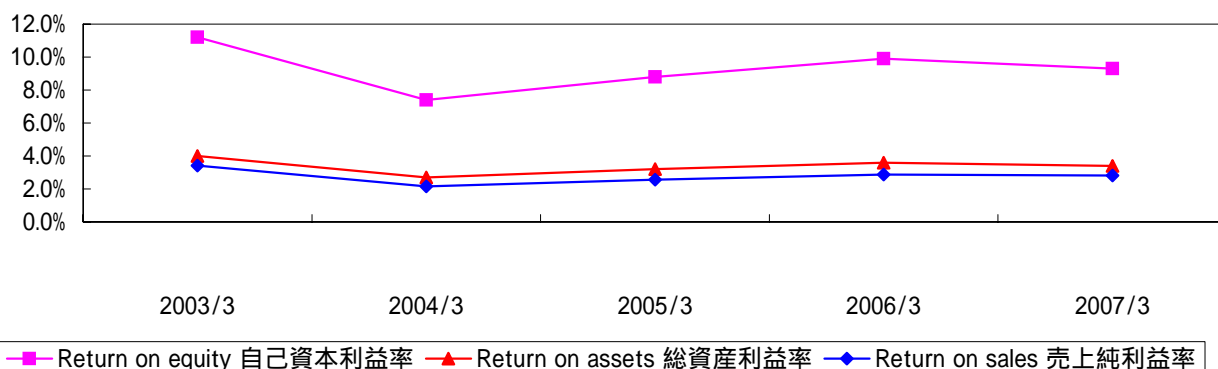
NOTES2: Effective from the fiscal year ended March 31, 2007, we adopted the new accounting standards.

注：有利子負債=短期借入金+長期借入金+社債+
転換社債(一年以内に返済期限の到来するものを含む)+コマーシャル・ペーパー
負債/株主資本比率=有利子負債/株主資本

注2: 2007年3月期決算より新会計基準を適用しています。

(2) Profitability and Investment Analysis Ratios 収益性

Return on Equity, Return on Assets and Return on Sales 自己資本利益率、総資産利益率、売上純利益率 他



		Yen ¥				
		2003/3	2004/3	2005/3	2006/3	2007/3
Return on equity	自己資本利益率	11.2%	7.4%	8.8%	9.9%	9.3%
Return on assets	総資産利益率	4.0%	2.7%	3.2%	3.6%	3.4%
Return on sales	売上純利益率	3.4%	2.2%	2.6%	2.9%	2.8%
Average number of shares outstanding(in thousands)						
期中平均発行済株式数(千株)		273,747	267,404	285,807	286,628	287,039
Earnings per share	一株当たり当期純利益	171.98	126.11	159.94	209.15	233.03
Cash dividends per share	一株当たり配当金	15.00	18.00	24.00	32.00	40.00
Number of shares outstanding as of the respective balance sheet datas(in thousands)						
期末発行済株式数(千株)		265,157	285,324	286,089	286,973	284,944
Shareholders' equity per share		1,612.96	1,771.12	1,928.58	2,361.66	2,662.78
一株当たり純資産						

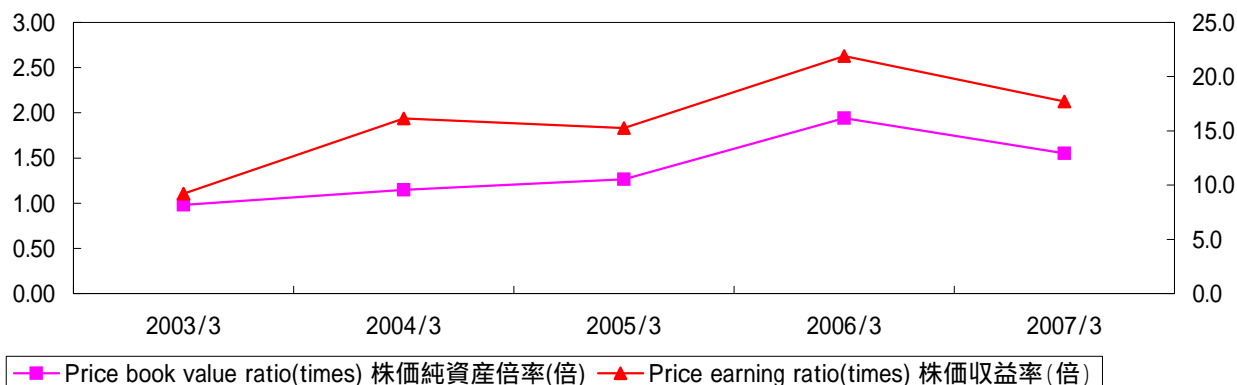
NOTES1: The figures for ratios involving shareholders' equity and total assets are calculated based on average shareholders' equity and total assets at the beginning and the end of each fiscal year.

NOTES2: Effective from the fiscal year ended March 31, 2007, we adopted the new accounting standards.

注1: 利益率は、各年度の期首・期末の総資産及び自己資本の平均値に基づいて計算されています。

注2: 2007年3月期決算より新会計基準を適用しています。

PER, PCFR and PBR 株価収益率、株価純資産倍率



		2003/3	2004/3	2005/3	2006/3	2007/3
Stock price at the end of fiscal year(yen)	期末株価(円)	1,585	2,035	2,440	4,580	4,130
Price earning ratio(times)	株価収益率(倍)	9.2	16.1	15.3	21.9	17.7
Price yield	株価益回り	10.9%	6.2%	6.6%	4.6%	5.6%
Price book value ratio(times)	株価純資産倍率(倍)	0.98	1.15	1.27	1.94	1.55

NOTES1: Price earning ratio = Stock price at the end of fiscal year / Earnings per share

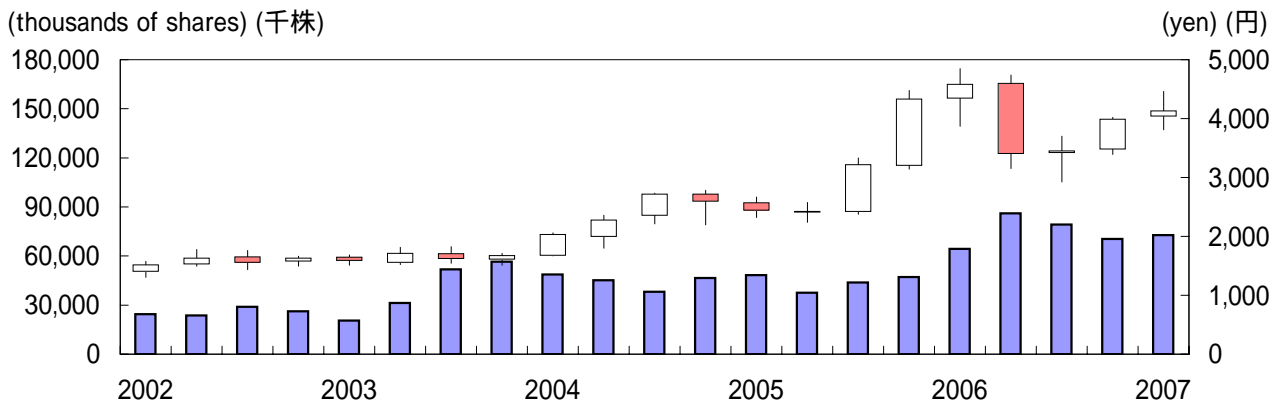
Price book value ratio = Stock price at the end of fiscal year / Shareholders' equity per share

NOTES2: Effective from the fiscal year ended March 31, 2007, we adopted the new accounting standards.

注1: 株価収益率(倍) = 株価 / 一株当たり当期純利益
 株価純資産倍率 = 株価 / 一株当たり純資産

注2: 2007年3月期決算より新会計基準を適用しています。

(3) Stock Price Change, Trading Volume and Number of Shares Outstanding 株価推移、出来高、発行済株式数



Trading volume 出来高 ■
 Stock Prices High ■ High □
■ Opening □ Closing
■ Closing □ Opening
 Low Low
 Orange : Opening Price > Closing Price
 White : Closing Price > Opening Price

高値 始値 ■ 高値 終値 □
 安値 終値 ■ 安値 始値 □
 オレンジ : 始値 > 終値
 白 : 終値 > 始値

			2002	2003	2004	2005	2006	2007
Stock prices(yen) 株価(円)								
Jan - Mar	High 1~3月	高値	1,574	1,685	2,060	2,670	4,850	4,460
	Low	安値	1,302	1,510	1,670	2,320	3,870	3,810
Apr - Jun	High 4~6月	高値	1,778	1,814	2,360	2,575	4,740	
	Low	安値	1,497	1,520	1,798	2,240	3,150	
Jul - Sep	High 7~9月	高値	1,759	1,828	2,735	3,330	3,700	
	Low	安値	1,433	1,543	2,210	2,375	2,925	
Oct - Dec	High 10~12月	高値	1,663	1,712	2,785	4,480	4,020	
	Low	安値	1,492	1,510	2,195	3,140	3,390	
Trading volume(thousands of shares) 出来高(千株)								
Jan - Mar	1~3月		24,363	20,523	48,707	48,402	64,329	72,808
Apr - Jun	4~6月		23,725	31,279	45,137	37,487	86,013	
Jul - Sep	7~9月		28,919	51,814	38,245	43,911	79,321	
Oct - Dec	10~12月		26,171	56,605	46,523	47,095	70,359	

Number of Employees
従業員数

		2003/3	2004/3	2005/3	2006/3	2007/3
Number of employees	従業員数	44,132	47,644	53,237	59,587	66,383