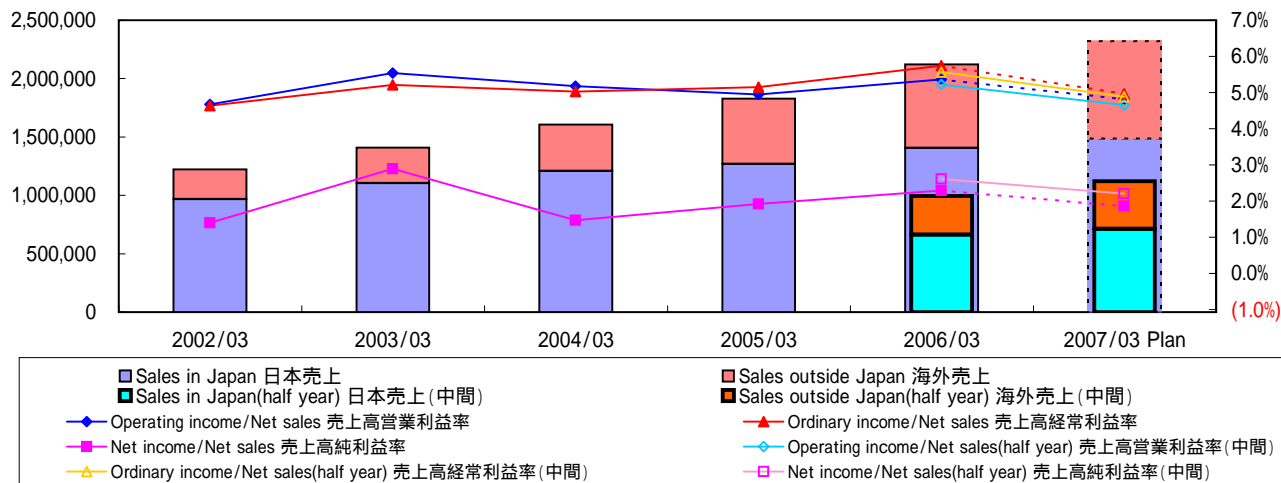
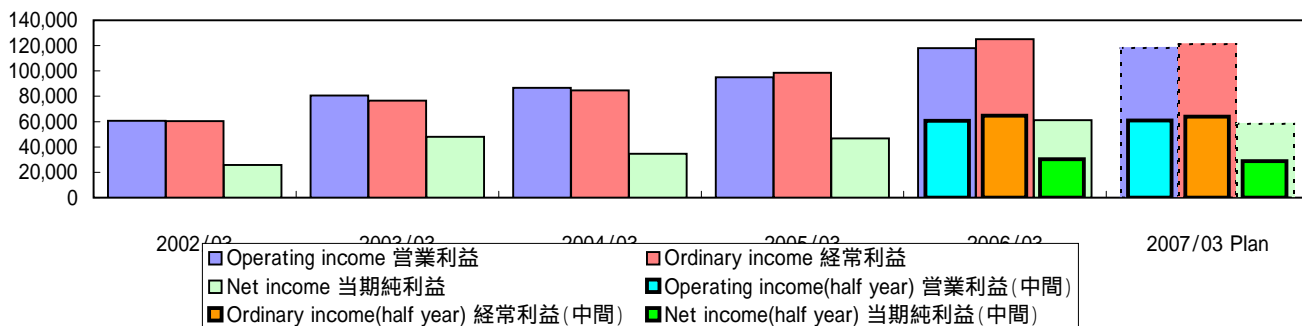


(1) Net Sales 売上高



		Millions of yen 百万円							
		2002/03	2003/03	2004/03	2005/03	2005/09	2006/03	2006/09	2007/03 Plan
		one year	one year	one year	one year	half year	one year	half year	one year
Net sales	売上高	1,221,916	1,408,013	1,605,252	1,829,065	994,241	2,120,589	1,120,308	2,320,000
Change from previous period	前期比	8.3%	15.2%	14.0%	13.9%	15.0%	15.9%	12.7%	9.4%
Sales in Japan	日本売上	968,879	1,103,980	1,208,312	1,269,497	663,665	1,406,585	711,850	1,484,000
Rate to net sales	売上比	79.3%	78.4%	75.3%	69.4%	66.8%	66.3%	63.5%	64.0%
Sales outside Japan	海外売上	253,037	304,033	396,940	559,568	330,576	714,004	408,458	836,000
Rate to net sales	売上比	20.7%	21.6%	24.7%	30.6%	33.2%	33.7%	36.5%	36.0%
Operating income/Net sales	売上高営業利益率	5.0%	5.7%	5.4%	5.2%	5.2%	5.6%	4.7%	5.1%
Ordinary income/Net sales	売上高経常利益率	4.9%	5.4%	5.3%	5.4%	5.6%	5.9%	4.9%	5.2%
Net income/Net sales	売上高純利益率	2.1%	3.4%	2.2%	2.6%	2.6%	2.9%	2.2%	2.5%

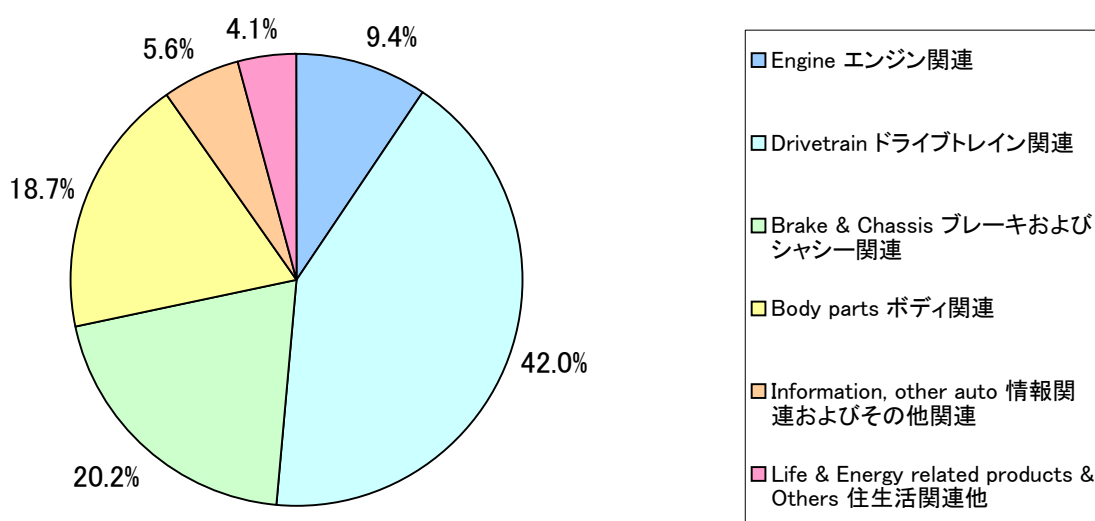
(2) Profits 利益



		Millions of yen 百万円							
		2002/03	2003/03	2004/03	2005/03	2005/09	2006/03	2006/09	2007/03 Plan
		one year	one year	one year	one year	half year	one year	half year	one year
Operating income	営業利益	60,644	80,601	86,768	95,111	51,950	118,097	52,171	118,000
Change from previous period	前期比	-6.4%	32.9%	7.7%	9.6%	23.4%	24.2%	0.4%	-
Ordinary income	経常利益	60,309	76,591	84,654	98,457	55,384	125,097	54,695	121,000
Change from previous period	前期比	-4.5%	27.0%	10.5%	16.3%	25.1%	27.1%	-1.2%	-3.3%
Net income	当期純利益	25,652	47,994	34,719	46,719	25,945	61,096	24,683	58,000
Change from previous period	前期比	454.8%	87.1%	-27.7%	34.6%	38.7%	30.8%	-4.9%	-5.1%

(1) Breakdown of Sales by Product Line 製品別売上高

2006/09



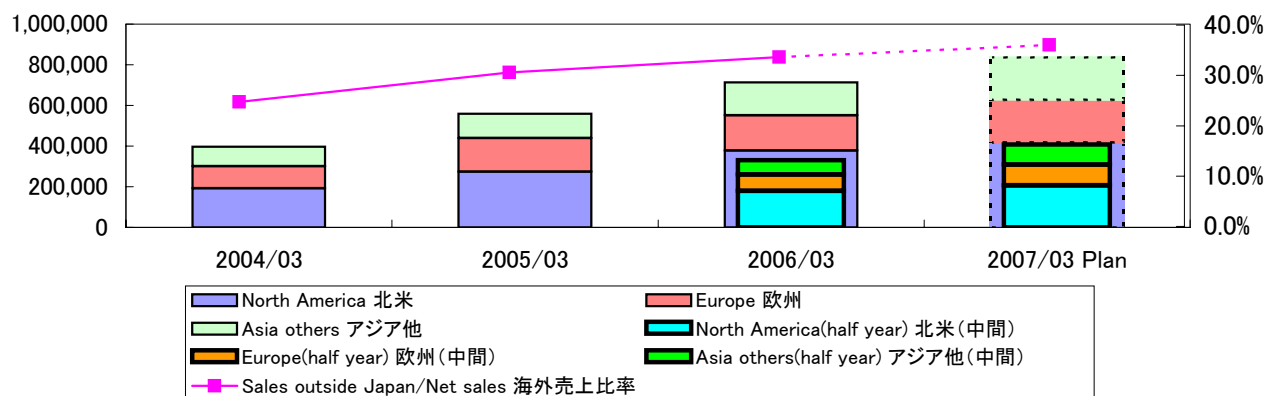
		Millions of yen 百万円					
		2004/03	2005/03	2005/09	2006/03	2006/09	2007/03 Plan
		one year	one year	half year	one year	half year	one year
Engine	エンジン関連	153,695	173,649	93,305	197,399	105,644	220,000
	構成比	9.6%	9.5%	9.4%	9.3%	9.4%	9.5%
	前期比	16.5%	13.0%	10.6%	13.7%	13.2%	11.4%
Drivetrain	ドライブトレイン関連	673,760	768,684	423,905	901,644	470,882	973,000
	構成比	42.0%	42.0%	42.6%	42.5%	42.0%	41.9%
	前期比	13.0%	14.1%	18.8%	17.3%	11.1%	7.9%
Brake & Chassis	ブレーキおよびシャシー関連	343,048	372,045	199,101	425,182	225,575	463,000
	構成比	21.4%	20.3%	20.0%	20.1%	20.2%	20.0%
	前期比	21.9%	8.5%	10.2%	14.3%	13.3%	8.9%
Body parts	ボディ関連	286,230	317,992	172,172	379,549	209,723	432,000
	構成比	17.8%	17.4%	17.3%	17.9%	18.7%	18.6%
	前期比	11.2%	11.1%	12.5%	19.4%	21.8%	13.8%
Information, other auto	情報関連およびその他関連	75,901	113,609	60,053	123,231	62,849	134,000
	構成比	4.7%	6.2%	6.1%	5.8%	5.6%	5.8%
	前期比	3.6%	49.7%	20.9%	8.5%	4.7%	8.7%
Life & Energy related products & Others	住生活関連他	72,618	83,086	45,705	93,584	45,635	98,000
	構成比	4.5%	4.6%	4.6%	4.4%	4.1%	4.2%
	前期比	7.6%	14.4%	14.9%	12.6%	-0.2%	4.7%
Total	合計	1,605,252	1,829,065	994,241	2,120,589	1,120,308	2,320,000

(2) Main Products 主要製品

		Main Products 主要製品	
Automotive Business 自動車関連	Engine エンジン関連	Oil pump, Water pump, オイルポンプ、ウォーターポンプ、 Intake/Exhaust Manifold, Casting parts インテーク/エキゾーストマニホールド、粗形材部品	
	Drivetrain ドライブトレイン関連	Automatic transmission, オートマチックトランスミッション、 Manual transmission, Clutch マニュアルトランスミッション、クラッチ	
	Brake & Chassis ブレーキおよびシャーシ関連	ABS, Brake booster, ABS、ブレーキブースタ、 Disk brake, Drum brake, VSC ディスクブレーキ、ドラムブレーキ、VSC	
	Body parts ボディ関連	Door Components, Sunroof, ドア部品、サンルーフ、 Seat Components, Window regulator シート部品、ウィンドレギュレーター Occupant weight sensor 体重検知センサー	
	Information, other auto 情報関連他	Navigation, Parking assist system, Sensors ナビゲーション、駐車アシスト、各種センサー	
Life & Energy related products & Others 住生活関連他	Sewing machine, Shower-toilet seat ミシン、シャワートイレ、 GHP(Gas engine driven heat-pump air conditioner) GHP(ガスヒートポンプエアコン)、 Bed, Others ベッド等		

(3)Sales by Customer Location 地域別売上高

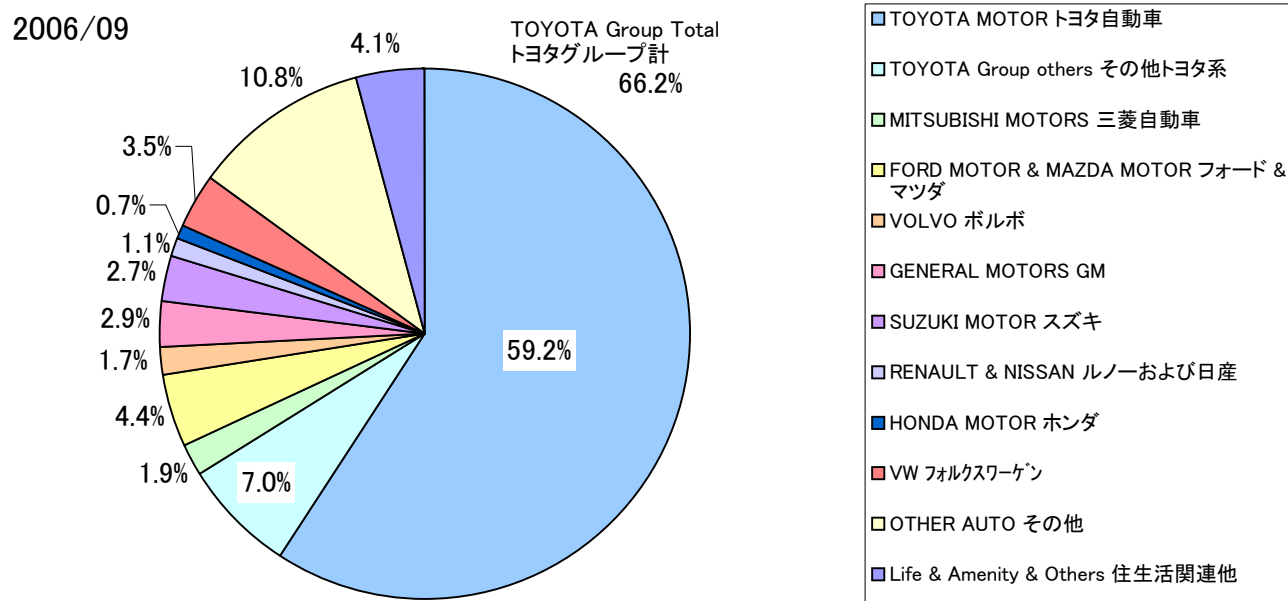
[Consolidated 連結]



Millions of yen 百万円

		2004/03	2005/03	2005/09	2006/03	2006/09	2007/03 Plan
		one year	one year	half year	one year	half year	one year
North America	北米	192,520	273,667	179,458	377,540	206,369	417,000
Percentage of net sales	構成比	48.5%	48.9%	54.3%	52.9%	50.5%	49.9%
Change from previous period	前期比	40.3%	42.1%	47.1%	38.0%	15.0%	10.5%
Europe	欧州	108,942	166,024	81,108	173,878	102,056	210,000
Percentage of net sales	構成比	27.4%	29.7%	24.5%	24.4%	25.0%	25.1%
Change from previous period	前期比	29.6%	52.4%	13.2%	4.7%	25.8%	20.8%
Asia others	アジア他	95,478	119,877	70,010	162,586	100,033	209,000
Percentage of net sales	構成比	24.1%	21.4%	21.2%	22.8%	24.5%	25.0%
Change from previous period	前期比	15.3%	25.6%	19.0%	35.6%	42.9%	28.5%
Sales outside Japan total	海外売上合計	396,940	559,568	330,576	714,004	408,458	836,000
Sales outside Japan/Net sales	海外売上比率	24.7%	30.6%	33.2%	33.7%	36.5%	36.0%

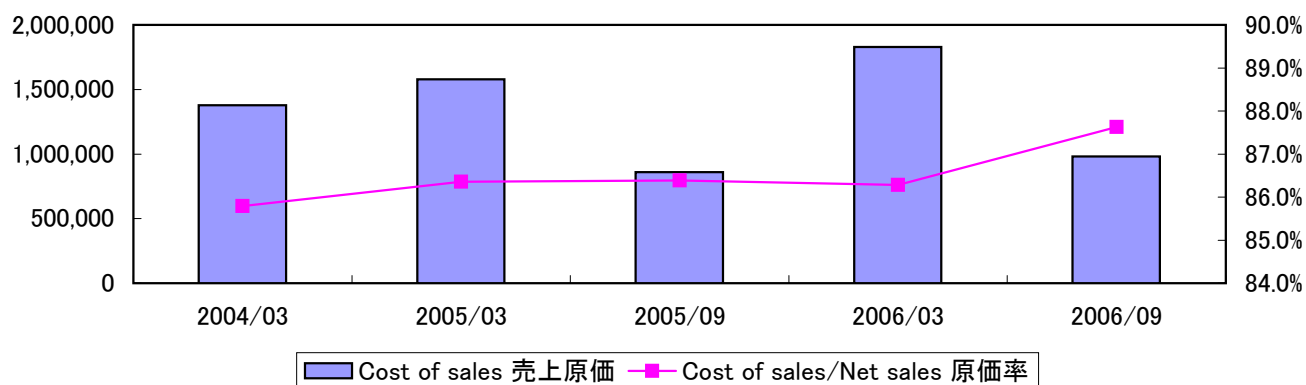
(4) Breakdown of Sales by Customer 得意先別売上高



		Millions of yen 百万円					
		2004/03	2005/03	2005/09	2006/03	2006/09	2007/03 Plan
		one year	one year	half year	one year	half year	one year
Automotive	自動車関連						
TOYOTA MOTOR	トヨタ自動車	846,445	873,058	446,619	948,797	478,843	1,005,300
TOYOTA MOTOR Overseas	トヨタ海外	112,023	225,917	143,100	295,749	183,886	374,200
DAIHATSU MOTOR	ダイハツ	13,026	18,651	9,435	20,309	12,465	24,200
TOYOTA Group others	その他トヨタ系	86,310	101,655	53,627	133,643	66,572	141,200
TOYOTA Group sub-total	トヨタグループ計	1,057,804	1,219,281	652,781	1,398,498	741,766	1,544,900
DAIMLERCHRYSLER	ダイムラークライスラー	432	1,689	973	2,766	2,283	4,700
MITSUBISHI MOTORS	三菱自動車	37,845	36,653	19,669	41,560	20,842	47,800
FORD MOTOR	フォード	2,632	15,490	23,252	50,505	30,242	56,700
MAZDA MOTOR	マツダ	17,583	14,629	7,787	22,137	18,821	41,000
VOLVO	ボルボ	36,453	37,210	18,206	38,664	19,395	40,300
GENERAL MOTORS	GM	20,911	42,243	22,583	62,962	32,407	61,500
SUZUKI MOTOR	スズキ	47,720	50,062	27,898	60,388	30,259	60,300
ISUZU MOTORS	いすゞ	17,734	18,853	9,531	19,064	11,052	21,700
RENAULT	ルノー	6,331	6,223	3,132	5,437	2,657	5,200
NISSAN	日産	20,864	29,769	13,980	30,233	10,194	21,000
HONDA MOTOR	ホンダ	8,968	13,089	7,243	14,629	7,748	16,100
VW	フォルクスワーゲン	18,732	37,961	30,501	66,138	38,666	69,200
OTHER AUTO	その他	238,625	222,827	111,000	214,024	108,341	231,600
Automotive Total	自動車関連合計	1,532,634	1,745,979	948,536	2,027,005	1,074,673	2,222,000
Life & Amenity	住生活関連						
INAX	イナックス	10,238	9,918	5,316	11,275	5,377	11,500
OTHER LIFE	その他	38,101	38,772	21,269	41,713	19,347	41,500
Life & Amenity Total	住生活関連合計	48,339	48,690	26,585	52,988	24,724	53,000
OTHERS	その他	24,279	34,396	19,120	40,596	20,911	45,000
Total	合計	1,605,252	1,829,065	994,241	2,120,589	1,120,308	2,320,000

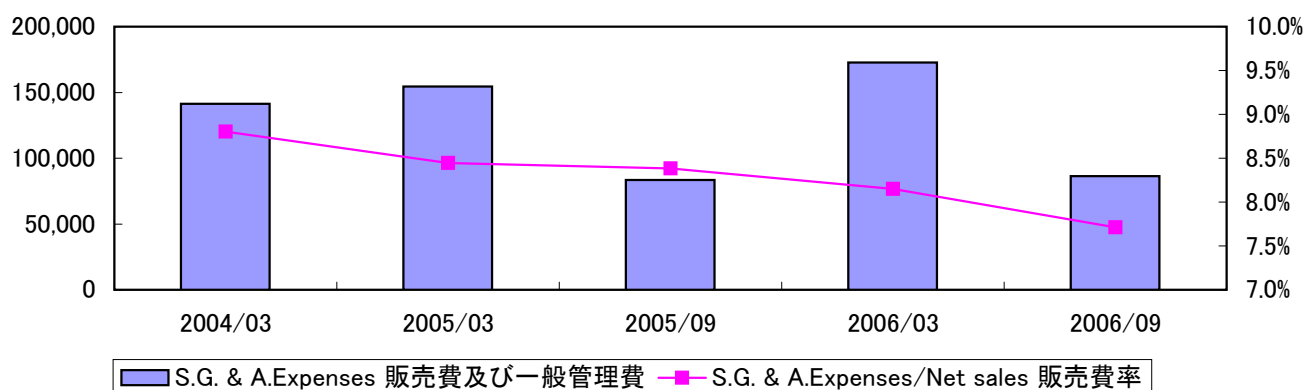
Cost of Sales
売上原価

[Consolidated 連結]



		Millions of yen 百万円				
		2004/03	2005/03	2005/09	2006/03	2006/09
		one year	one year	half year	one year	half year
Cost of sales	売上原価	1,377,161	1,579,485	858,924	1,829,682	981,747
Change from previous period	前期比	13.7%	14.7%	15.6%	15.8%	14.3%
Cost of sales/Net sales	原価率	85.8%	86.4%	86.4%	86.3%	87.6%

S.G. & A. Expenses
販売費および一般管理費

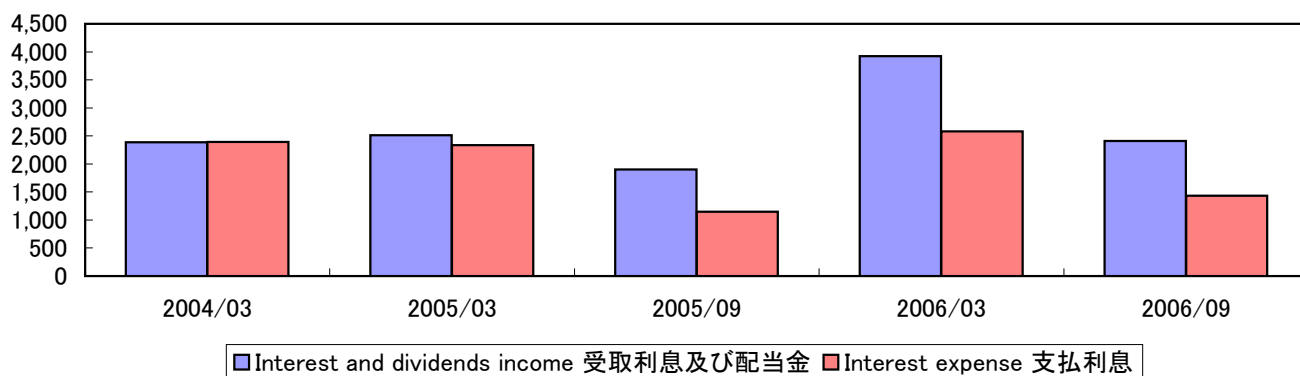


		Millions of yen 百万円				
		2004/03	2005/03	2005/09	2006/03	2006/09
		one year	one year	half year	one year	half year
S.G. & A. Expenses	販売費及び一般管理費	141,323	154,469	83,367	172,810	86,390
Change from previous period	前期比	21.8%	9.3%	5.0%	11.9%	3.6%
S.G. & A. Expenses/Net sales	販売費率	8.8%	8.4%	8.4%	8.1%	7.7%

Other Income and Expenses
その他収支

[Consolidated 連結]

Net Financial Revenue 金融収支



		Millions of yen 百万円				
		2004/03	2005/03	2005/09	2006/03	2006/09
		one year	one year	half year	one year	half year
Interest and dividends income	受取利息及び配当金	2,388	2,510	1,903	3,926	2,409
Interest expense	支払利息	2,394	2,337	1,150	2,581	1,434
Net financial revenue	金融収支	-6	173	753	1,345	975
Interest coverage (times)	インタレストカバレッジ(倍)	37.2	41.8	46.8	47.3	38.1

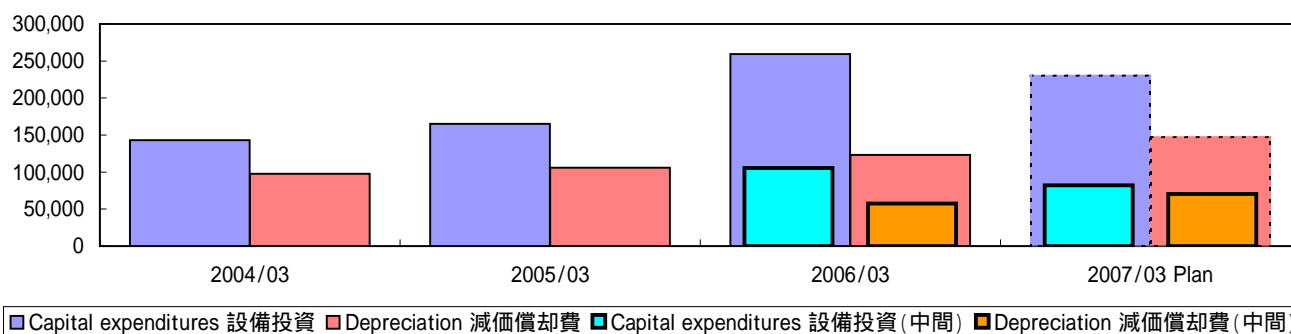
NOTES: Interest coverage = (Operating income + Interest and dividends income) / Interest expense

注: インタレストカバレッジ = (営業利益 + 受取利息配当金) / 支払利息

Capital Expenditures, Depreciation
投資設備、減価償却費

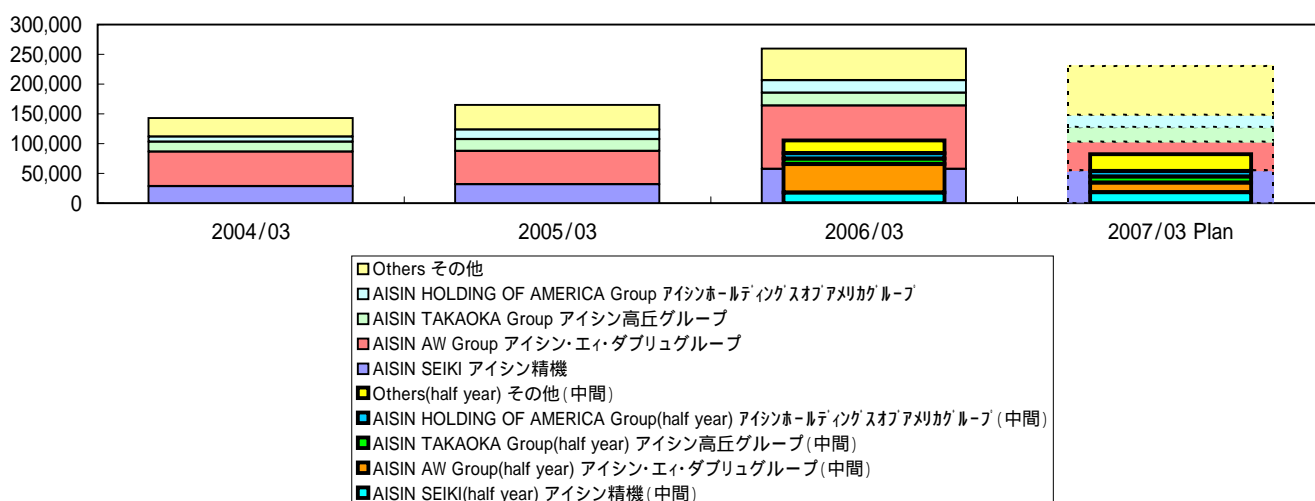
[Consolidated 連結]

(1) Capital Expenditures, Depreciation 設備投資、減価償却費



		Millions of yen 百万円					
		2004/03	2005/03	2005/09	2006/03	2006/09	2007/03 Plan
		one year	one year	half year	one year	half year	one year
Capital expenditures	設備投資	143,154	165,289	105,407	259,540	82,004	230,000
	Change from previous period						
	前期比	15.3%	15.5%	52.0%	57.0%	-22.2%	-11.4%
Depreciation	減価償却費	97,564	105,969	57,689	123,034	70,420	147,000
	Change from previous period						
	前期比	13.0%	8.6%	12.6%	16.1%	22.1%	19.5%

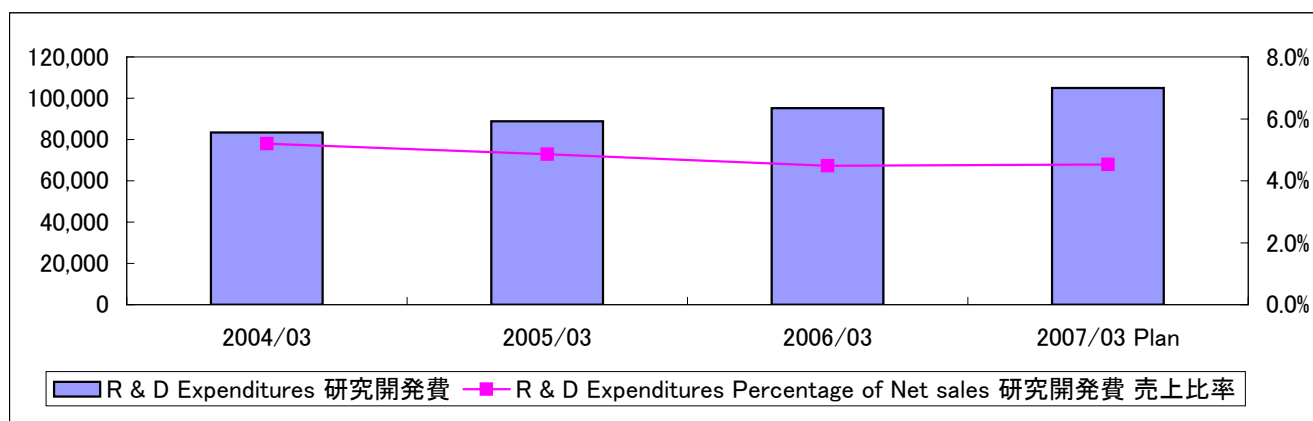
(2) Capital Expenditures by Company 設備投資額会社別内訳



		Millions of yen 百万円					
		2004/03	2005/03	2005/09	2006/03	2006/09	2007/03 Plan
		one year	one year	half year	one year	half year	one year
AISIN SEIKI	アイシン精機	28,457	31,960	17,668	57,509	18,482	55,000
	Change from previous period						
	前期比	7.6%	12.3%	77.5%	79.9%	4.6%	-4.4%
AISIN AW Group	アイシン・エイ・ダブリュグループ	57,935	55,482	48,001	106,309	15,739	47,900
	Change from previous period						
	前期比	10.7%	-4.2%	117.7%	91.6%	-67.2%	-54.9%
AISIN TAKAOKA Group	アイシン高丘グループ	16,858	20,147	8,837	21,852	10,583	24,300
	Change from previous period						
	前期比	35.7%	19.5%	-11.5%	8.5%	19.8%	11.2%
AISIN HOLDING OF AMERICA Group	アイシンホールディングスオブアメリカグループ	8,588	15,859	9,387	21,023	8,834	20,800
	Change from previous period						
	前期比	-10.8%	84.7%	20.5%	32.6%	-5.9%	-1.1%
Others	その他	31,316	41,841	21,514	52,847	28,366	82,000
	Change from previous period						
	前期比	34.1%	33.6%	9.9%	26.3%	31.8%	55.2%

Research and Development Expenditures 研究開発費

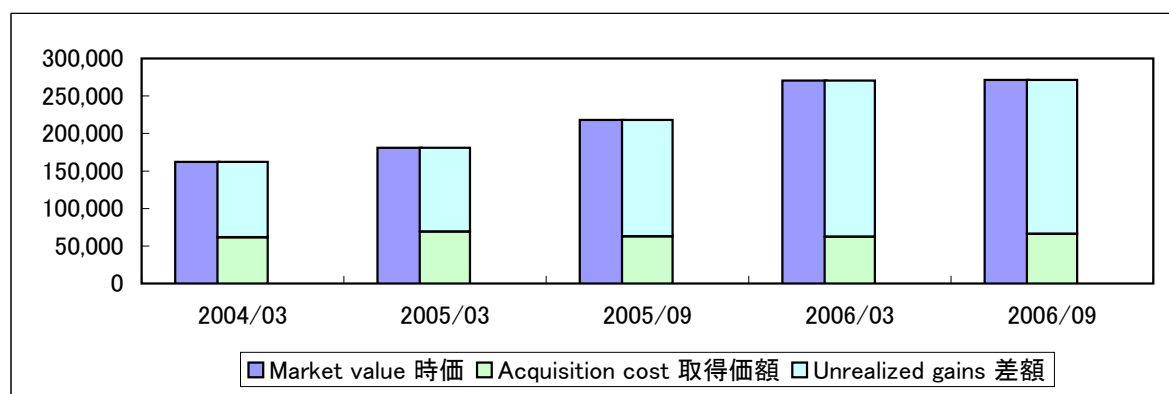
[Consolidated 連結]



Millions of yen 百万円

		2004/03	2005/03	2006/03	2007/03 Plan
R & D Expenditures	研究開発費	83,410	88,800	95,149	105,000
Change from previous period	前期比	5.2%	6.5%	7.1%	10.4%
Percentage of Net sales	売上比率	5.2%	4.9%	4.5%	4.5%

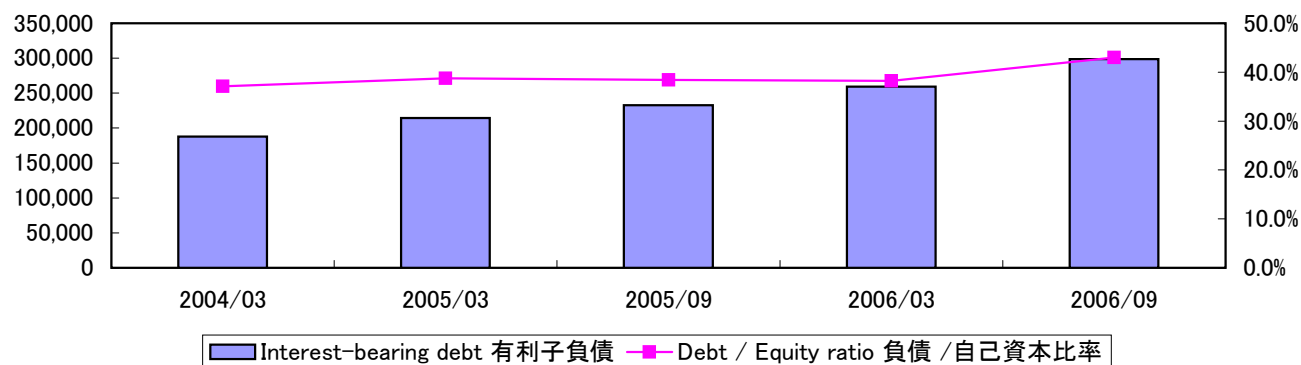
Unrealized Gains on Marketable Securities 市場性のある有価証券の含み益



Millions of yen 百万円

		2004/03	2005/03	2005/09	2006/03	2006/09
Equity securities	株式					
Market value	時価	146,233	157,863	201,034	254,031	250,968
Acquisition cost	取得価額	45,317	45,942	45,813	45,881	45,884
Unrealized gains	差額	100,916	111,921	155,221	208,150	205,084
Debt securities and others	債券他					
Market value	時価	16,110	23,207	16,913	16,416	20,312
Acquisition cost	取得価額	16,046	23,185	16,932	16,511	20,318
Unrealized gains	差額	64	22	-19	-95	-6

(1) Safety 安全性



		Millions of yen 百万円				
		2004/03	2005/03	2005/09	2006/03	2006/09
Total assets	総資産	1,382,585	1,503,314	1,618,469	1,853,459	1,849,182
Total assets turnover(times)	総資産回転率(回転)	1.2	1.2	0.6	1.1	0.6
Interest-bearing debt	有利子負債	187,998	214,197	232,867	259,349	298,756
Debt / Equity ratio	負債 / 自己資本比率	37.1%	38.8%	38.4%	38.2%	43.0%
Shareholders' equity	自己資本	506,261	552,753	606,617	678,881	694,488
Shareholders' ratio	自己資本比率	36.6%	36.8%	37.5%	36.6%	37.6%

NOTES1: Interest-bearing debt=Short-term borrowings+Long-term debt+Straight bonds
+Convertible bonds(included Convertible bonds due within one year)+Commercial paper
Debt/equity ratio=Interest-bearing debt/Shareholders' equity ratio

NOTES2: Effective from the fiscal half year ended Sep. 30, 2006, we adopted the new accounting standards.

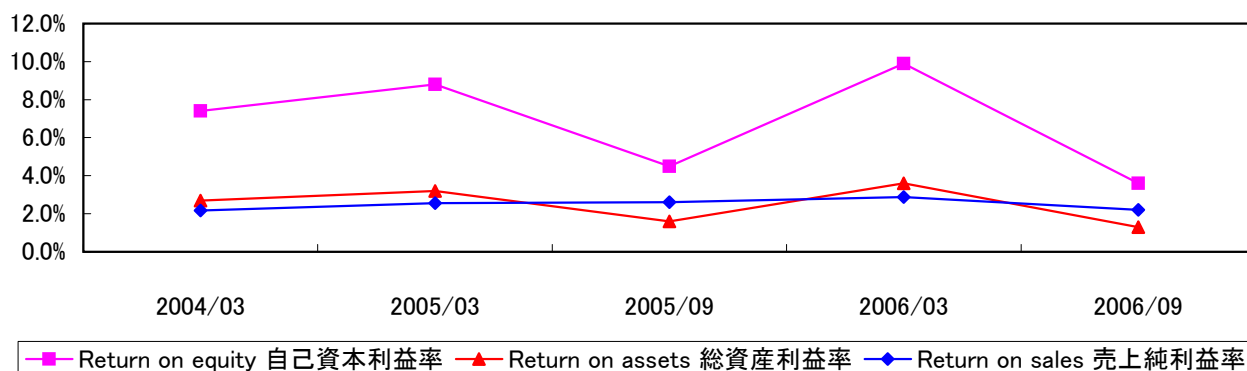
注1: 有利子負債=短期借入金+長期借入金+社債+
転換社債(一年以内に返済期限の到来するものを含む)+コマーシャル・ペーパー
負債/自己資本比率=有利子負債/自己資本

注2: 2007年3月期 中間決算より新会計基準を適用しています。

(2) Profitability and Investment Analysis Ratios 収益性

[Consolidated 連結]

① Return on Equity, Return on Assets and Return on Sales 自己資本利益率、総資産利益率、売上純利益率 他



		Yen 円				
		2004/03	2005/03	2005/09	2006/03	2006/09
Return on equity	自己資本利益率	7.4%	8.8%	4.5%	9.9%	3.6%
Return on assets	総資産利益率	2.7%	3.2%	1.6%	3.6%	1.3%
Return on sales	売上純利益率	2.2%	2.6%	2.6%	2.9%	2.2%
Average number of shares outstanding(in thousands)						
期中平均発行済株式数(千株)		267,404	285,807	286,354	286,628	287,037
Earnings per share	一株当たり当期純利益	126.11	159.94	90.60	209.15	85.99
Cash dividends per share	一株当たり配当金	18.00	24.00	13.00	32.00	16.00
Number of shares outstanding as of the respective balance sheet datas(in thousands)						
期末発行済株式数(千株)		285,324	286,089	286,862	286,973	287,318
Shareholders' equity per share	一株当たり純資産	1,771.12	1,928.58	2,114.67	2,361.66	2,417.14

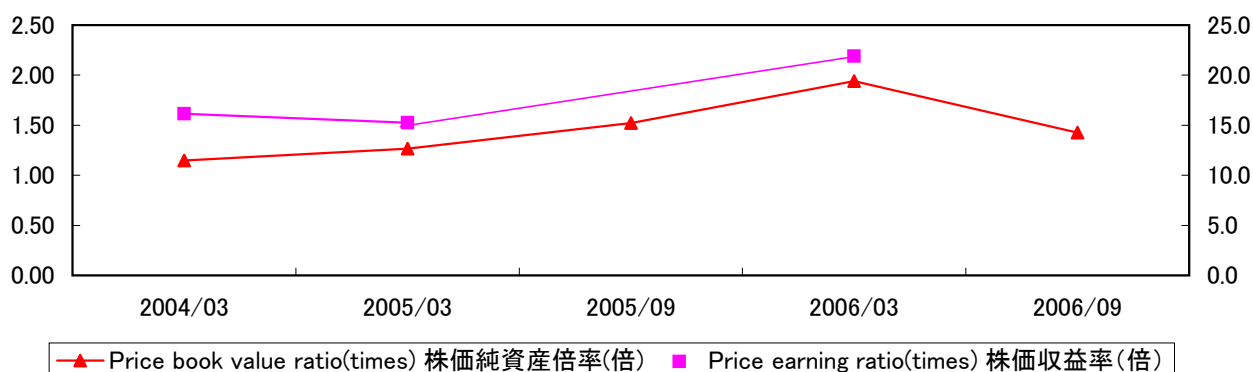
NOTES1: The figures for ratios involving shareholders' equity and total assets are calculated based on average shareholders' equity and total assets at the beginning and the end of each fiscal year.

NOTES2: Effective from the fiscal half year ended Sep. 30, 2006, we adopted the new accounting standards.

注1: 利益率は、各年度の期首・期末の総資産及び自己資本の平均値に基づいて計算されています。

注2: 2007年3月期 中間決算より新会計基準を適用しています。

② PER, PCFR and PBR 株価収益率、株価純資産倍率



		2004/03	2005/03	2005/09	2006/03	2006/09
Stock price at the end of fiscal year(yen)	期末株価(円)	2,035	2,440	3,220	4,580	3,450
Price earning ratio(times)	株価収益率(倍)	16.1	15.3	-	21.9	-
Price yield	株価益回り	6.2%	6.6%	-	4.6%	-
Price book value ratio(times)	株価純資産倍率(倍)	1.15	1.27	1.52	1.94	1.43

NOTES1: Price earning ratio = Stock price at the end of fiscal year / Earnings per share

Price book value ratio = Stock price at the end of fiscal year / Shareholders' equity per share

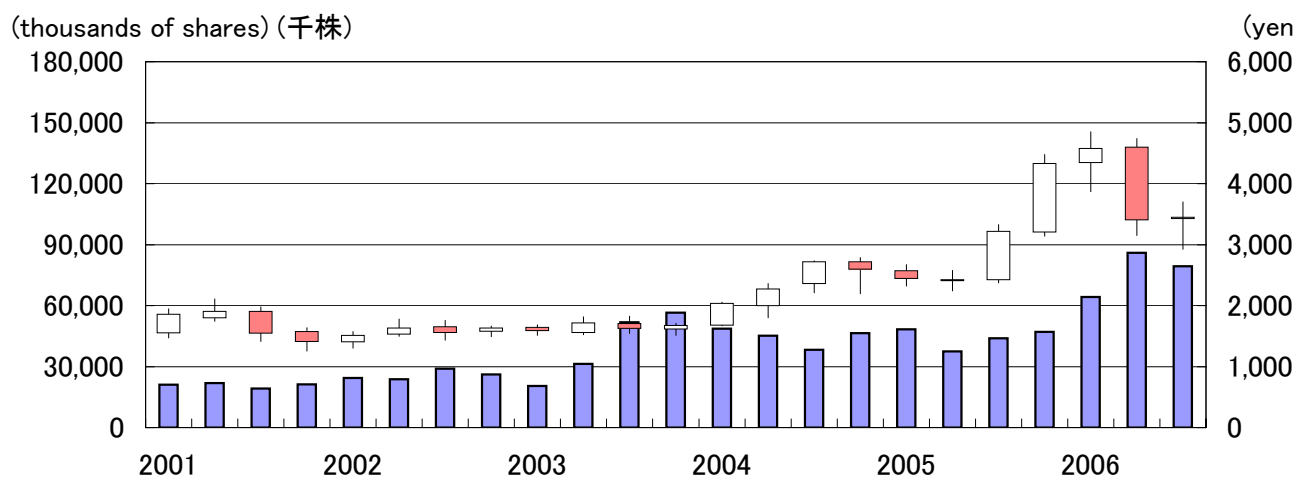
NOTES2: Effective from the fiscal half year ended Sep. 30, 2006, we adopted the new accounting standards.

注1: 株価収益率(倍) = 株価 / 一株当たり当期純利益

株価純資産倍率 = 株価 / 一株当たり純資産

注2: 2007年3月期 中間決算より新会計基準を適用しています。

(3) Stock Price Change, Trading Volume and Number of Shares Outstanding 株価推移、出来高、発行済株式数



Trading volume 出来高 → ■

Stock Prices High

Opening

Closing

Low

High

Closing

Opening

Low

高値

始値

終値

安値

高値

終値

始値

安値

Orange : Opening Price > Closing Price

White : Closing Price > Opening Price

オレンジ : 始値 > 終値

白 : 終値 > 始値

		2001	2002	2003	2004	2005	2006
Stock prices(yen) 株価(円)							
Jan - Mar	High 1~3月 高値	1,948	1,574	1,685	2,060	2,670	4,850
	Low 安値	1,472	1,302	1,510	1,670	2,320	3,870
Apr - Jun	High 4~6月 高値	2,110	1,778	1,814	2,360	2,575	4,740
	Low 安値	1,745	1,497	1,520	1,798	2,240	3,150
Jul - Sep	High 7~9月 高値	1,980	1,759	1,824	2,735	3,330	3,700
	Low 安値	1,413	1,433	1,543	2,210	2,375	2,925
Oct - Dec	High 10~12月 高値	1,640	1,663	1,712	2,785	4,480	
	Low 安値	1,252	1,492	1,510	2,275	3,140	
Trading volume(thousands of shares) 出来高(千株)							
Jan - Mar	1~3月	21,120	24,363	20,523	48,707	48,402	64,329
Apr - Jun	4~6月	21,894	23,725	31,279	45,137	37,487	86,013
Jul - Sep	7~9月	19,167	28,919	51,814	38,245	43,911	79,321
Oct - Dec	10~12月	21,322	26,171	56,605	46,523	47,095	

Number of Employees

従業員数

		2004/03	2005/03	2005/09	2006/03	2006/09
Number of employees	従業員数	47,644	53,237	56,784	59,587	64,307

Consolidated Balance Sheets
連結貸借対照表

[Consolidated 連結]

	Millions of yen 百万円				
	2004/03	2005/03	2005/09	2006/03	2006/09
Assets 資産の部					
Current Assets: 流動資産:					
Cash and time deposits 現金および預金	99,792	90,288	78,405	95,443	94,090
Marketable securities 有価証券	37,029	34,109	31,135	32,435	16,026
Notes and accounts receivable 受取手形および売掛金	257,028	287,956	307,373	336,865	330,185
Less : Allowance for doubtful accounts 貸倒引当金	-1,108	-690	-912	-1,776	-745
Inventories たな卸資産	99,518	122,461	136,458	148,782	158,425
Deferred tax assets 繰延税金資産	36,555	35,921	34,307	42,842	37,654
Other current assets その他流動資産	26,249	31,837	30,978	39,439	40,514
Total current assets 流動資産合計	555,063	601,882	617,744	694,030	676,149
Property, Plant and Equipment: 有形固定資産:					
Buildings and structures 建物および構築物	393,913	409,857	432,861	460,024	473,327
Machinery and equipment 機械装置、車両運搬具	983,602	1,056,425	1,116,946	1,199,497	1,245,647
Furniture, fixtures and office 工具器具備品	187,964	199,507	204,961	216,691	223,941
Less : Accumulated depreciation 減価償却累計額	-1,101,483	-1,157,184	-1,195,318	-1,244,251	-1,289,836
Land 土地	76,709	82,258	84,818	85,321	85,638
Construction in progress 建設仮勘定	40,848	36,353	35,326	60,482	46,424
Net property, Plant and equipment 有形固定資産合計	581,553	627,216	679,594	777,764	785,141
Investments and Advances: 投資その他の資産:					
Investment securities 投資有価証券	188,971	215,953	262,533	319,717	321,398
Long-term receivables 長期貸付金	4,440	4,246	4,498	4,314	4,828
Less : Allowance for doubtful accounts 貸倒引当金	-602	-628	-1,688	-455	-1,217
Deferred tax assets 繰延税金資産	21,806	22,031	21,622	21,451	22,100
Excess of cost of investments over equity in net assets acquired のれん	632	15	-	-	2,190
Others その他投資	30,722	32,599	34,166	36,638	38,593
Total investments and advances 投資その他の資産合計	245,969	274,216	321,131	381,665	387,892
Total assets 資産合計	1,382,585	1,503,314	1,618,469	1,853,459	1,849,182

NOTES: Effective from the fiscal half year ended Sep. 30, 2006, we adopted the new accounting standards.

注: 2007年3月期 中間決算より新会計基準を適用しています。

Liabilities and net assets 負債および純資産の部	2004/03	2005/03	2005/09	2006/03	2006/09
Current liabilities: 流動負債:					
Commercial paper and short-term borrowings コマーシャルペーパーおよび短期借入金	53,028	58,779	48,873	46,888	55,048
Straight bonds due within one year 一年以内償還社債	5,000	-	-	150	150
Convertible bonds due within one year 一年以内償還転換社債	-	-	-	-	-
Notes and accounts payable 支払手形および買掛金	241,526	262,654	286,106	327,177	317,243
Income taxes payable 未払法人税等	19,167	21,419	16,317	31,783	12,353
Accrued expenses 未払費用	104,147	106,470	106,177	117,499	113,466
Other current liabilities その他流動負債	70,427	82,290	86,716	115,603	79,415
Total current liabilities 流動負債合計	493,295	531,612	544,189	639,100	577,675
Long-term liabilities: 固定負債:					
Straight bonds 社債	25,650	25,650	25,650	35,500	35,000
Long-term debt 長期借入金	104,320	129,768	158,344	176,811	208,558
Deferred tax liabilities 繰延税金負債	23,787	26,458	43,831	63,609	62,596
Liability for employees' retirement benefits 退職給付引当金	78,385	81,965	82,186	84,751	85,517
Other long-term liabilities その他固定負債	17,253	9,415	2,423	2,624	3,982
Total long-term liabilities 固定負債合計	249,395	273,256	312,434	363,295	395,653
Shareholders' equity: 株主資本:					
Common stock, per value ¥50 per share 資本金	45,049	45,049	45,049	45,049	45,049
Additional paid-in capital 資本剰余金	62,927	63,061	63,246	63,263	63,814
Retained earnings 利益剰余金	352,591	392,836	413,785	445,241	463,360
Less: Treasury stock 自己株式	-4,355	-3,116	-1,919	-1,821	-1,393
Evaluation and conversion difference: 評価・換算差額等:					
Net unrealized gain on available-for-sale securities その他有価証券評価差額	60,140	66,597	92,289	123,721	122,100
Profit & loss of deferral 繰延ヘッジ損益	-	-	-	-	-560
Foreign currency translation adjustments 為替換算調整勘定	-10,091	-11,674	-5,833	3,428	2,118
Subscription warrant 新株予約権	-	-	-	-	42
Minority interests 少数株主持分	133,634	145,693	155,229	172,183	181,324
Total net assets 純資産計	639,895	698,446	761,846	851,064	875,854
Total liabilities and net assets 負債および純資産合計	1,382,585	1,503,314	1,618,469	1,853,459	1,849,182

NOTES: Effective from the fiscal half year ended Sep. 30, 2006, we adopted the new accounting standards.
注: 2007年3月期 中間決算より新会計基準を適用しています。

Consolidated Statements of Income
連結損益計算書

[Consolidated 連結]

	Millions of yen 百万円				
	2004/03	2005/03	2005/09	2006/03	2006/09
	one year	one year	half year	one year	half year
Net sales 売上高	1,605,252	1,829,065	994,241	2,120,589	1,120,308
Cost of sales 売上原価	1,377,161	1,579,485	858,924	1,829,682	981,747
Gross profit 売上総利益	228,091	249,580	135,317	290,907	138,561
Selling, General and administrative expenses 販売費および一般管理費	141,323	154,469	83,367	172,810	86,390
Operating income 営業利益	86,768	95,111	51,950	118,097	52,171
Non-operating Income: 営業外収益:					
Interest and dividend income 受取利息配当金	2,388	2,510	1,903	3,926	2,409
Equity in earnings of affiliates 持分法による投資利益	2,691	5,548	2,317	5,542	3,059
Other non-operating income その他営業外収益	8,225	9,127	4,776	10,874	4,620
Non-operating expenses: 営業外費用:					
Interest expense 支払利息	2,394	2,337	1,150	2,581	1,434
Other non-operating expenses その他営業外費用	13,024	11,502	4,412	10,761	6,130
Ordinary income 経常利益	84,654	98,457	55,384	125,097	54,695
Extraordinary Income: 特別利益:					
Return of the substituted portion of the employee pension fund to the government 厚生年金基金代行部分返上益	-	-	-	-	-
Extraordinary Loss: 特別損失:					
Payment to new accounting standard for retirement benefits and others 新年金制度拠出金等	-	-	-	-	-
Loss from return of the substituted portion of pension 厚生年金基金代行部分返上認可日から 返還日までの確定損失一括認識	7,319	-	-	-	-
Impairment Loss of Fixed Assets 減損損失	-	5,727	-	-	-
Income before income taxes and minority interests 税金等調整前当期純利益	77,335	92,730	55,384	125,097	54,695
Income Taxes 法人税等					
Current 法人税、住民税および事業税等	30,442	32,609	17,471	47,801	13,901
Deferred 法人税等調整額	-1,105	-1,132	2,119	-7,650	5,242
Minority interests in net income(Loss) 少数株主利益(損失)	13,279	14,534	9,849	23,850	10,869
Net income 当期純利益	34,719	46,719	25,945	61,096	24,683

Consolidated Statements of Cash Flows
連結キャッシュ・フロー計算書

[Consolidated 連結]

	Millions of yen 百万円				
	2004/03	2005/03	2005/09	2006/03	2006/09
	one year	one year	half year	one year	half year
Operating Activities:					
営業活動によるキャッシュ・フロー:					
Income before income taxes and minority interests 税金等調整前当期純利益	77,335	92,730	55,384	125,097	54,695
Depreciation 減価償却費	97,564	105,969	57,689	123,034	70,420
Increase/(Decrease) in allowance for retirement benefits 退職給付引当金の増減額	2,449	3,580	221	2,785	766
Interest and dividend income 受取利息および受取配当金	-2,388	-2,510	-1,903	-3,926	-2,409
Interest expenses 支払利息	2,394	2,337	1,150	2,581	1,434
Equity in earnings of affiliates 持分法による投資利益	-2,691	-5,548	-2,317	-5,542	-3,059
Loss on sale or disposal of property, plant and equipment, net 有形固定資産除売却損	3,373	4,677	1,763	3,717	1,667
Decrease/(Increase) in notes and accounts receivable 売上債権の増減額	-18,416	-29,545	-18,590	-46,720	7,854
(Increase)/Decrease in inventories 棚卸資産の増減額	-5,406	-23,116	-13,013	-23,493	-8,448
(Decrease)Increase in notes and accounts payable 仕入債務の増減額	26,599	20,040	21,443	59,048	-9,740
Others その他	-16,193	5,105	-18,934	-13,695	-9,123
Sub total 小計	164,620	173,719	82,893	222,886	104,057
Interest and dividends received 利息及び配当金の受取額	2,802	2,933	2,577	4,748	3,373
Interest paid 利息の支払額	-2,319	-2,411	-1,170	-2,498	-958
Payment of income taxes 法人税等の支払額	-32,204	-31,565	-23,521	-39,420	-35,190
Net cash provided by operating activities 営業活動によるキャッシュ・フロー	132,899	142,676	60,779	185,716	71,282
Investing Activities:					
投資活動によるキャッシュ・フロー					
Net (increase) decrease in time deposits and short-term investments 定期預金および有価証券の純増減額	-3,254	-3,437	8,460	10,075	-6,589
Acquisitions of property, plant and equipment 有形固定資産の取得による支出	-147,586	-162,328	-97,622	-218,753	-122,514
Proceeds from sales of property, plant and equipment 有形固定資産の売却による収入	4,415	5,364	3,685	4,113	5,564
Purchase of investment securities 投資有価証券の取得による支出	-9,057	-13,147	-4,414	-9,433	-8,828
Payments for purchase of shares of consolidated company accompanied by change of scope of consolidation 連結範囲の変更を伴う子会社株式・出資金の取得による支出	-6,949	-35	-	-	-508
Proceeds of sales of investment in securities 投資有価証券の売却による収入	2,446	1,253	2,128	2,506	55
Proceeds of redemption at maturity of investments in securities 投資有価証券の満期償還による収入	3,763	2,329	483	1,086	2,219
Increase in loans 貸付による支出	-686	-637	-636	-1,068	-2,208
Decrease in loans 貸付金の回収による収入	1,544	750	411	1,009	459
Other, net その他	-5,434	-4,930	-1,811	-5,031	-2,376
Net cash used in investing activities 投資活動によるキャッシュ・フロー	-160,798	-174,818	-89,316	-215,496	-134,726
Financing Activities:					
財務活動によるキャッシュ・フロー:					
Net increase/(decrease) in commercial paper and short-term borrowings コマーシャルペーパーおよび短期借入金の純増減額	-11,073	2,318	-18,030	-22,598	15,433
Increase in long-term debt 長期借入金による収入	62,078	32,687	40,047	65,187	36,670
Repayments of long-term debt 長期借入金の返済による支出	-7,399	-2,171	-5,502	-7,688	-12,250
Increase in long-term bonds 社債の発行による収入	10,650	-	-	10,000	-
Repayments of long-term bonds 社債の償還による支出	-5,037	-5,000	-	-	-500
Receipt from minority shareholders 少数株主からの払込による収入	1,014	1,036	287	671	52
Cash dividends 配当金の支出額	-4,338	-5,620	-3,971	-7,660	-5,398
Cash dividends to minority shareholders 少数株主への配当金の支払額	-1,652	-2,320	-1,690	-2,569	-2,728
Purchase of treasury stock 自己株式の取得による支出	-19	-30	-13	-30	-12
Income for disposal of treasury stock 自己株式の処分による収入	-	1,405	1,393	1,521	1,258
Other, net その他	-	-	-	-	-
Net cash used in financing activities 財務活動によるキャッシュ・フロー	44,224	22,305	12,521	36,834	32,525
Foreign currency translation adjustments on cash and cash equivalents 現金および現金同等物に係る換算差額	-1,843	24	1,998	4,758	17
Net (decrease)/Increase in cash and cash equivalents 現金および現金同等物の増加(減少)額	14,482	-9,813	-14,018	11,812	-30,902
Cash and cash equivalents at beginning of period 現金および現金同等物の期首残高	111,732	126,214	116,401	116,401	128,213
Cash and cash equivalents at end of period 現金及び現金同等物の期末残高	126,214	116,401	102,383	128,213	97,311

Segment Information
セグメント情報

[Consolidated 連結]

Geographical Segments by company location 所在地別セグメント情報

		Millions of yen 百万円				
		2004/03	2005/03	2005/09	2006/03	2006/09
		one year	one year	half year	one year	half year
Sales:	売上高:					
Japan:	日本:					
Sales to customers	対外部顧客	1,295,626	1,358,654	715,529	1,516,392	776,997
Intersegment sales	セグメント間	154,115	226,474	142,874	299,071	148,919
Total sales	計	1,449,741	1,585,128	858,403	1,815,463	925,916
North America:	北米:					
Sales to customers	対外部顧客	188,744	268,737	165,444	348,156	186,735
Intersegment sales	セグメント間	6,451	7,612	4,118	9,336	4,634
Total sales	計	195,195	276,349	169,562	357,492	191,369
Europe:	欧州:					
Sales to customers	対外部顧客	77,007	138,617	65,898	142,643	79,860
Intersegment sales	セグメント間	4,402	5,428	2,435	5,431	2,908
Total sales	計	81,409	144,045	68,333	148,074	82,768
Asia & Others:	アジア他:					
Sales to customers	対外部顧客	43,875	63,057	47,370	113,397	76,716
Intersegment sales	セグメント間	4,987	5,273	3,249	7,954	3,698
Total sales	計	48,862	68,330	50,619	121,351	80,414
Eliminations	消去	-169,955	-244,787	-152,676	-321,791	-160,159
Consolidated	連結	1,605,252	1,829,065	994,241	2,120,589	1,120,308
Operating income:	営業利益:					
Japan	日本	80,864	84,548	42,883	99,210	35,739
North Americas	北米	241	2,946	3,618	4,680	4,676
Europe	欧州	-78	1,231	176	611	2,195
Asia & Others	アジア他	6,557	7,259	5,720	14,604	9,500
Eliminations	消去	-816	-873	-447	-1,008	61
Consolidated	連結	86,768	95,111	51,950	118,097	52,171