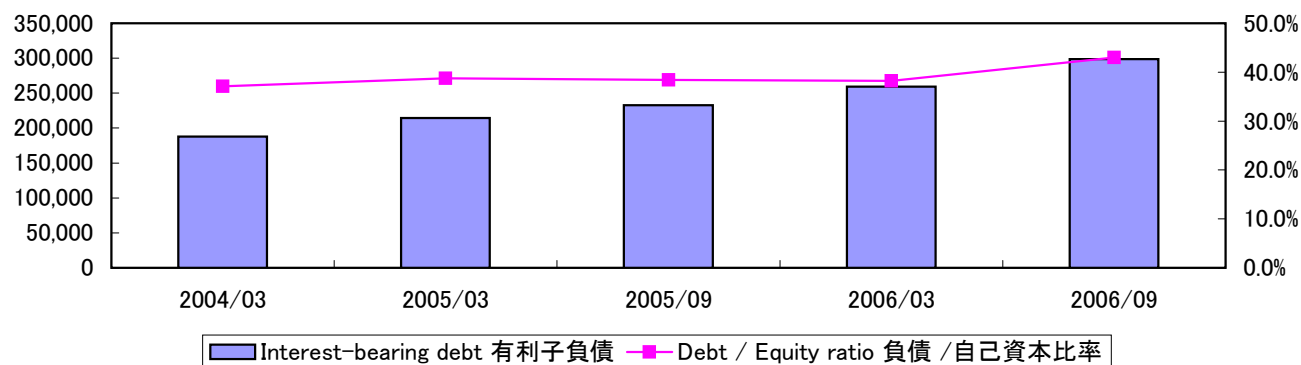


(1) Safety 安全性



		Millions of yen 百万円				
		2004/03	2005/03	2005/09	2006/03	2006/09
Total assets	総資産	1,382,585	1,503,314	1,618,469	1,853,459	1,849,182
Total assets turnover(times)	総資産回転率(回転)	1.2	1.2	0.6	1.1	0.6
Interest-bearing debt	有利子負債	187,998	214,197	232,867	259,349	298,756
Debt / Equity ratio	負債 / 自己資本比率	37.1%	38.8%	38.4%	38.2%	43.0%
Shareholders' equity	自己資本	506,261	552,753	606,617	678,881	694,488
Shareholders' ratio	自己資本比率	36.6%	36.8%	37.5%	36.6%	37.6%

NOTES1: Interest-bearing debt=Short-term borrowings+Long-term debt+Straight bonds
+Convertible bonds(included Convertible bonds due within one year)+Commercial paper
Debt/equity ratio=Interest-bearing debt/Shareholders' equity ratio

NOTES2: Effective from the fiscal half year ended Sep. 30, 2006, we adopted the new accounting standards.

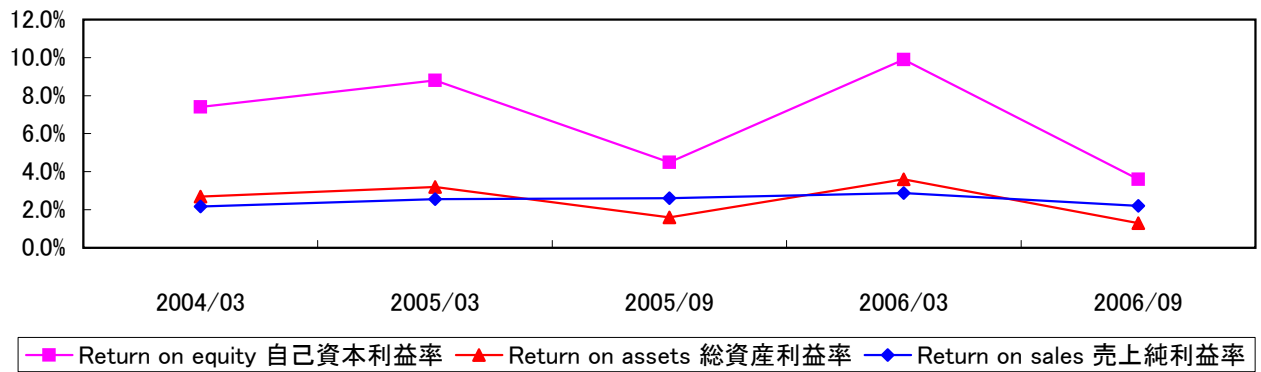
注1: 有利子負債=短期借入金+長期借入金+社債+
転換社債(一年以内に返済期限の到来するものを含む)+コマーシャル・ペーパー
負債/自己資本比率=有利子負債/自己資本

注2: 2007年3月期 中間決算より新会計基準を適用しています。

(2) Profitability and Investment Analysis Ratios 収益性

[Consolidated 連結]

① Return on Equity, Return on Assets and Return on Sales 自己資本利益率、総資産利益率、売上純利益率 他



		Yen 円				
		2004/03	2005/03	2005/09	2006/03	2006/09
Return on equity	自己資本利益率	7.4%	8.8%	4.5%	9.9%	3.6%
Return on assets	総資産利益率	2.7%	3.2%	1.6%	3.6%	1.3%
Return on sales	売上純利益率	2.2%	2.6%	2.6%	2.9%	2.2%
Average number of shares outstanding(in thousands)						
期中平均発行済株式数(千株)		267,404	285,807	286,354	286,628	287,037
Earnings per share	一株当たり当期純利益	126.11	159.94	90.60	209.15	85.99
Cash dividends per share	一株当たり配当金	18.00	24.00	13.00	32.00	16.00
Number of shares outstanding as of the respective balance sheet datas(in thousands)						
期末発行済株式数(千株)		285,324	286,089	286,862	286,973	287,318
Shareholders' equity per share	一株当たり純資産	1,771.12	1,928.58	2,114.67	2,361.66	2,417.14

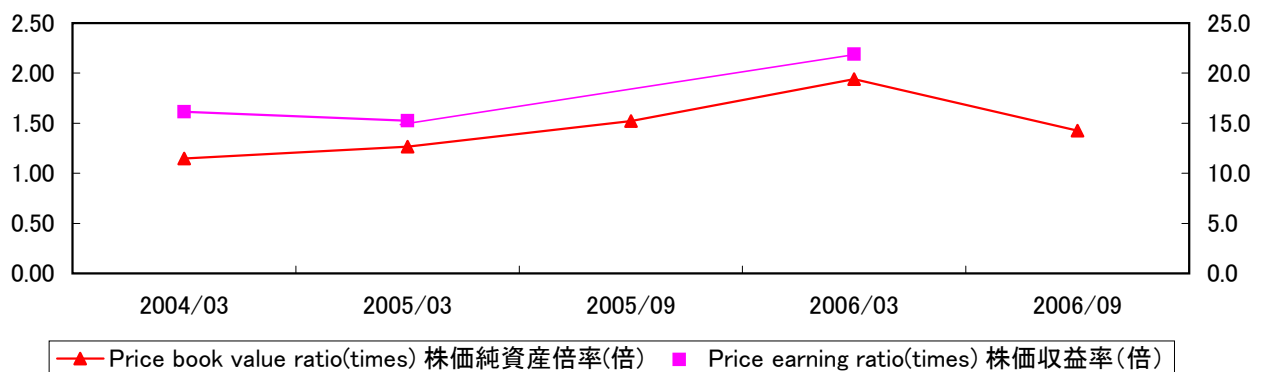
NOTES1: The figures for ratios involving shareholders' equity and total assets are calculated based on average shareholders' equity and total assets at the beginning and the end of each fiscal year.

NOTES2: Effective from the fiscal half year ended Sep. 30, 2006, we adopted the new accounting standards.

注1: 利益率は、各年度の期首・期末の総資産及び自己資本の平均値に基づいて計算されています。

注2: 2007年3月期 中間決算より新会計基準を適用しています。

② PER, PCFR and PBR 株価収益率、株価純資産倍率



		2004/03	2005/03	2005/09	2006/03	2006/09
Stock price at the end of fiscal year(yen)	期末株価(円)	2,035	2,440	3,220	4,580	3,450
Price earning ratio(times)	株価収益率(倍)	16.1	15.3	-	21.9	-
Price yield	株価益回り	6.2%	6.6%	-	4.6%	-
Price book value ratio(times)	株価純資産倍率(倍)	1.15	1.27	1.52	1.94	1.43

NOTES1: Price earning ratio = Stock price at the end of fiscal year / Earnings per share

Price book value ratio = Stock price at the end of fiscal year / Shareholders' equity per share

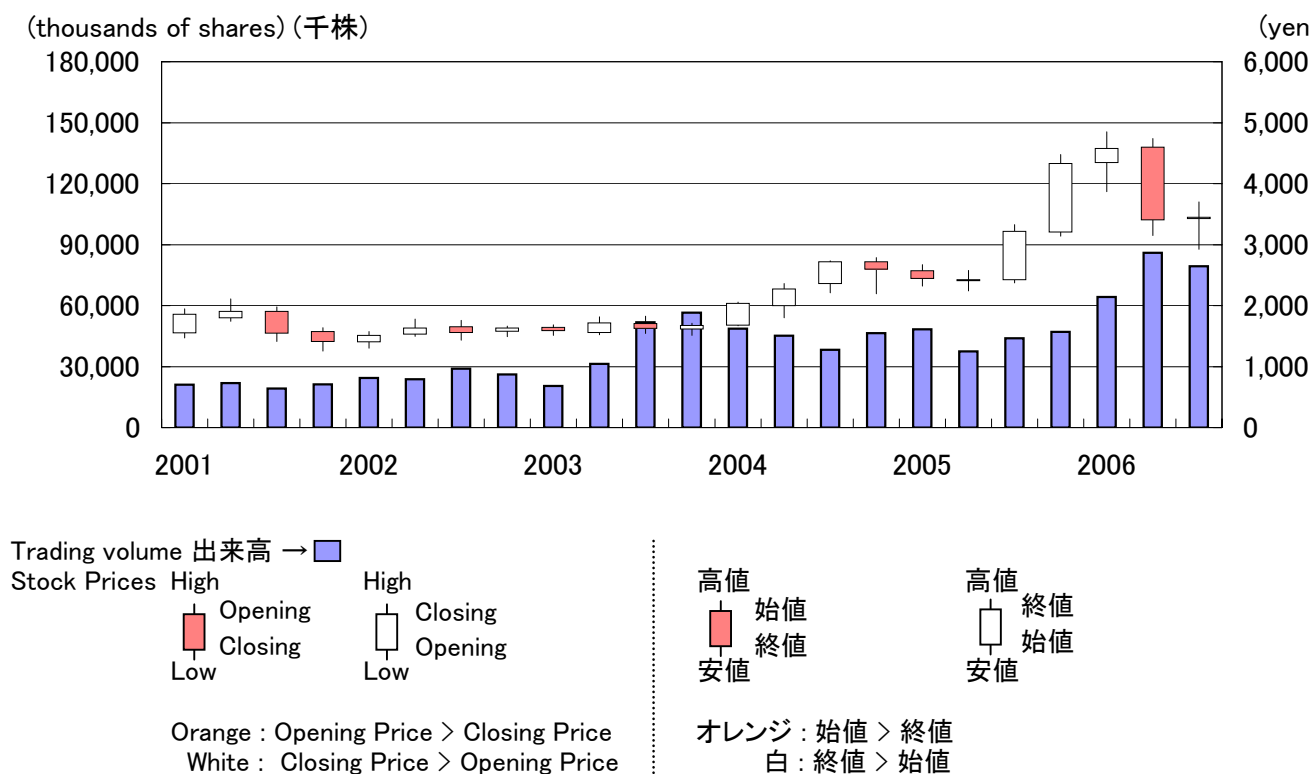
NOTES2: Effective from the fiscal half year ended Sep. 30, 2006, we adopted the new accounting standards.

注1: 株価収益率(倍) = 株価 / 一株当たり当期純利益

株価純資産倍率 = 株価 / 一株当たり純資産

注2: 2007年3月期 中間決算より新会計基準を適用しています。

(3) Stock Price Change, Trading Volume and Number of Shares Outstanding 株価推移、出来高、発行済株式数



		2001	2002	2003	2004	2005	2006
Stock prices(yen) 株価(円)							
Jan - Mar	1~3月						
High	高値	1,948	1,574	1,685	2,060	2,670	4,850
Low	安値	1,472	1,302	1,510	1,670	2,320	3,870
Apr - Jun	4~6月						
High	高値	2,110	1,778	1,814	2,360	2,575	4,740
Low	安値	1,745	1,497	1,520	1,798	2,240	3,150
Jul - Sep	7~9月						
High	高値	1,980	1,759	1,824	2,735	3,330	3,700
Low	安値	1,413	1,433	1,543	2,210	2,375	2,925
Oct - Dec	10~12月						
High	高値	1,640	1,663	1,712	2,785	4,480	
Low	安値	1,252	1,492	1,510	2,275	3,140	
Trading volume(thousands of shares) 出来高(千株)							
Jan - Mar	1~3月	21,120	24,363	20,523	48,707	48,402	64,329
Apr - Jun	4~6月	21,894	23,725	31,279	45,137	37,487	86,013
Jul - Sep	7~9月	19,167	28,919	51,814	38,245	43,911	79,321
Oct - Dec	10~12月	21,322	26,171	56,605	46,523	47,095	

Number of Employees
従業員数

		2004/03	2005/03	2005/09	2006/03	2006/09
Number of employees	従業員数	47,644	53,237	56,784	59,587	64,307